

Operation manual Picture Lift 50" sideways



-> K.01 Introduction

-> K.02 Properties

-> K.03 Product dimensions

-> K.04 Initial Setup

Setup P.06
Figures P.07

-> K.05 Product control

Transmitter setup P.08
Receiver Reset P.09
Connection to smart home P.09

-> K.06 Product integration

-> K.07 Diagnosis

-> K.08 Imprint



Intended Use

The product is designed for moving pictures sideways in front of Flat-TV sets. All company names and product names are trademarks of their respective owners. All rights reserved.

The scope of delivery may vary depending on the product and the equipment series. Please check the completeness of the delivery and notify us within 7 days of receipt, if the delivery is not complete.

Safety and hazard warnings

Please read this chapter carefully and follow all listed instructions. This ensures reliable operation and a long service life of your lift system. Keep the operating instructions in a safe place.

Damage caused by non-observance of these operating instructions invalidates the guarantee! For consequential damages we accept no liability. In case of property damage or personal injury caused by improper handling or non-observance of the safety instructions, we assume no liability! In such cases, any warranty claim expires.

- > For safety reasons, the unauthorized conversion and / or alteration of the product is not permitted. Do not dismantle it.
- > The product is not a toy and does not belong in the hands of children.
- > The product must not be damp or wet.
- > Do not leave the packing material careless, children could choke in the worst case if swallowed.
- > Dropping from a low height will damage the product.
- > Before using for the first time, please check that it is possible for the Flatlift to move in and out, including the mounted TV set, and ensure a collision-free ride.

Your Flatlift is equipped by law and insurance regulations with a "deadman circuit".

This means that the button for retracting or retracting must be pressed permanently.

As soon as you release the button, the system stops.

The quality

We have focused our attention on high functionality, ease of use, safety and reliability in the choice of components.

We thank you for your trust in our Flatlift brand products.

Through individual customer care we support you during your installation.



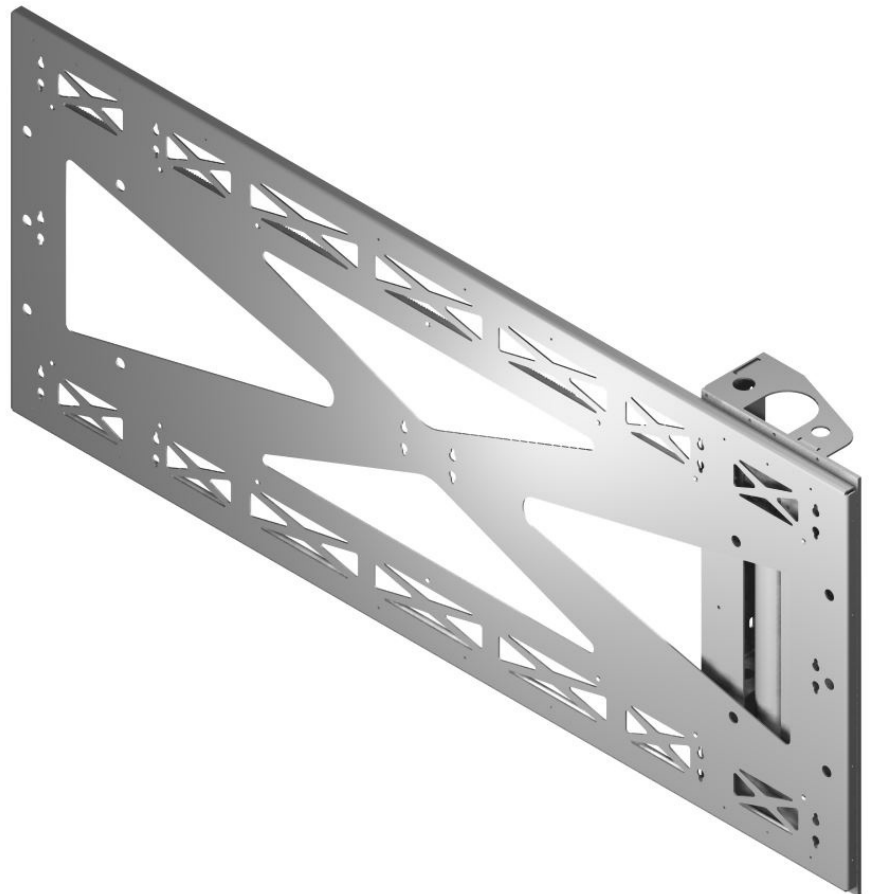
Characteristics:

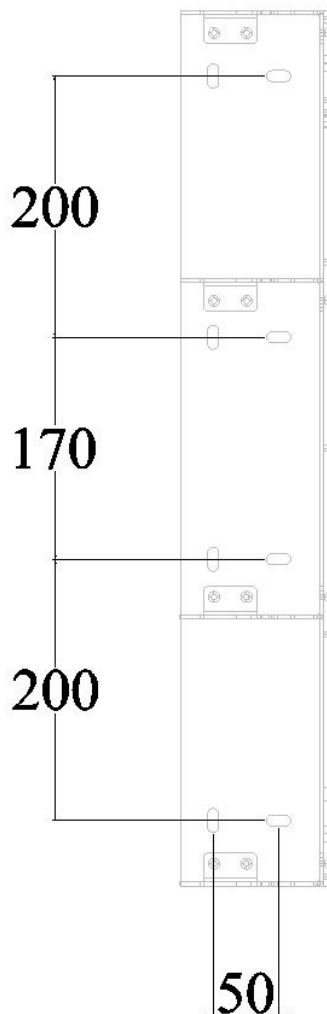
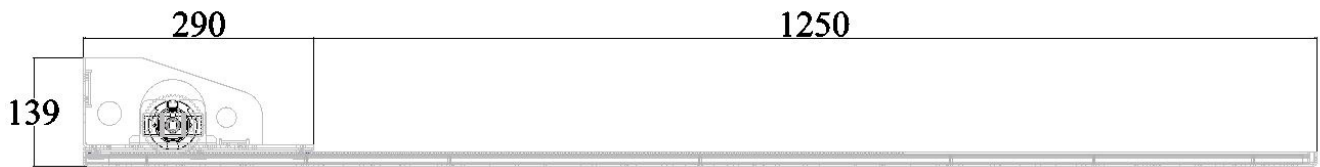
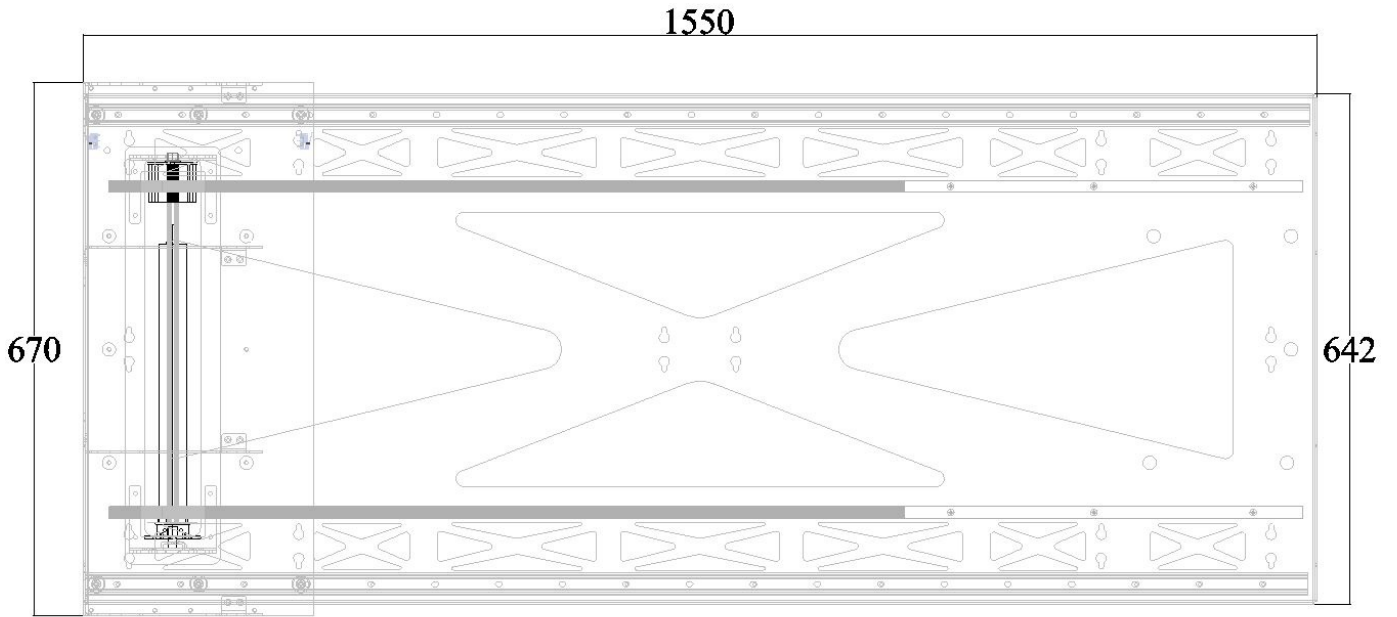
- > Installation dimensions Flatlift
W = 1550mm D = 139mm H = 670mm
- > Stroke 1250mm
- > lifting speed 20mm / sec
- > picture weight max. 20kg / 200N
- > TV size 50 "(inches)
(maximum possible TV size in mm: W = 1200 D = * H = *)
- > duty cycle 5%
- > Low noise level
- > ambient temperature + 5 ° C to 40 ° C
- > connection to room control possible (optional)
- > TV limit switch (optional)
- > 230V emergency power supply (optional)

Delivery:

- > Flatlift Picture Lift 50" sideways
- > radio receiver (preinstalled)
- > Radio hand transmitter
- > Adjustment tool
- > 230 V power cable (preinstalled)

* not relevant





front side

drill picture



Initial setup:

1. In order to be able to fasten the Picture image, loosen the 14 screws (Fig. 1 No.1) on the front of the system. Secure your base unit with at least 4 screws, sideways, in the wall niche. For the hole spacing, you can use the hole pattern (P.05). The front of the base support must be flush with your cut-out edge.
2. Place the motor unit in the base carrier and replace all screws.
3. Connect the preassembled power cord to the power cord.
4. Open the system by pressing the "1" button on the remote control (P.07 Fig. 2).
5. Mount her picture.
6. Close the lift by pressing the "0" button on the remote control.
7. It may happen that the lift does not open or close completely, as the systems are only preset at the factory. This can be set on the drive (P.07 Fig.3). Use the supplied adjustment key for this purpose. On the drive, you can see which of the two set screws is in the closed position. Turn the adjustment screw on the actuator in the direction indicated to adjust the end point. Press the "1" key to open the system a bit and then the "0" key to close it again.

If necessary, this process must be repeated.

9. You can attach the wall panel or picture to the keyhole cutouts (2).

You can also set the "Open" position using the same method. Use the other adjusting screw for this purpose.

When the positions are set, the lift is ready for use.

fig. 1

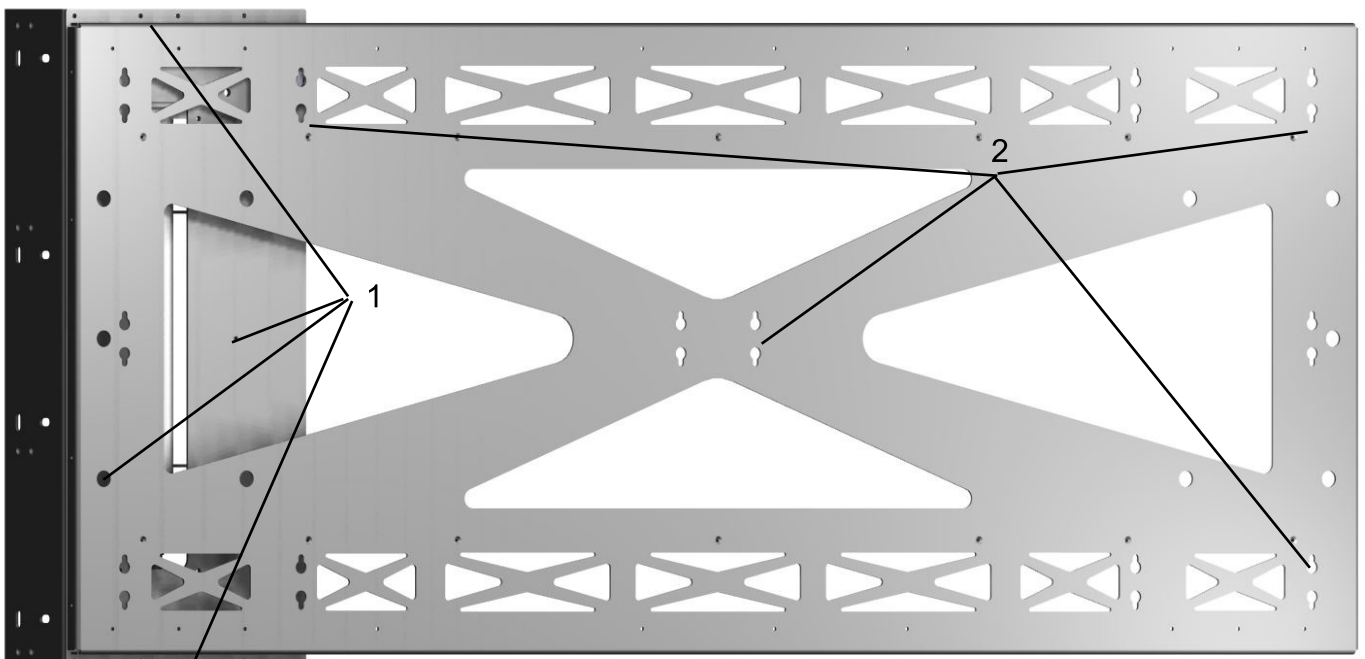




fig. 2

fig. 3

In the picture you can see the adjusting screws. The white screw is for turning upwards. If you now turn the white screw in the direction of "+" (clockwise), the travel becomes larger. If you turn in the direction of "-" it becomes smaller.





RF pairing:

You can also optionally purchase additional remote controls for your Flatlift system. Since the transmitters are coded, you have to teach them in. Up to 6 codes can be learned.

- 1) Open the control box to access the radio receiver and the programming button.
- 2) Press the button (fig. 1 no. 1). The LED will then flash.
- 3) Press a button on the transmitter (fig. 2).
- 4) The LED flashes twice to confirm that the code of the remote control has been accepted.



fig. 1



fig. 2



Reset the radio receiver:

It may occasionally happen that the stored transmitter codes are lost in the receiver. In this case the receiver can be deleted and reprogrammed.

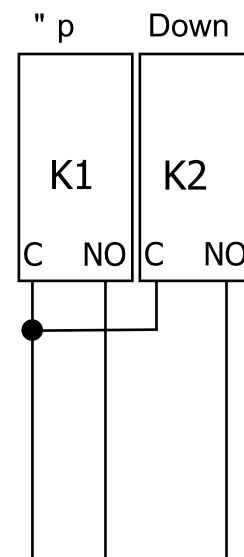
- 1) Open the control box to access the radio receiver and the programming button.
- 2) Press the programming button for approx. 6 seconds. The LED starts to flash.
- 3) Press the programming button again. All stored codes have now been deleted.
- 4) Now learn the remote control again (see p. 8).

Connection to a room control:

You can connect your Flatlift to a room control if it has 2 relay outputs with floating contacts. These relays must be operated for a programmable period of time.

- 1) Disconnect the radio receiver from the mains.
- 2) Disconnect the cables (terminals) on the radio receiver.
- 3) Now connect the brown wire to one of the relay outputs.
- 4) Connect the black wire to the second relay output.
- 5) The brown wire of the 230V power supply is connected as "COM".
- 6) Neutral and PE are connected to the supply.

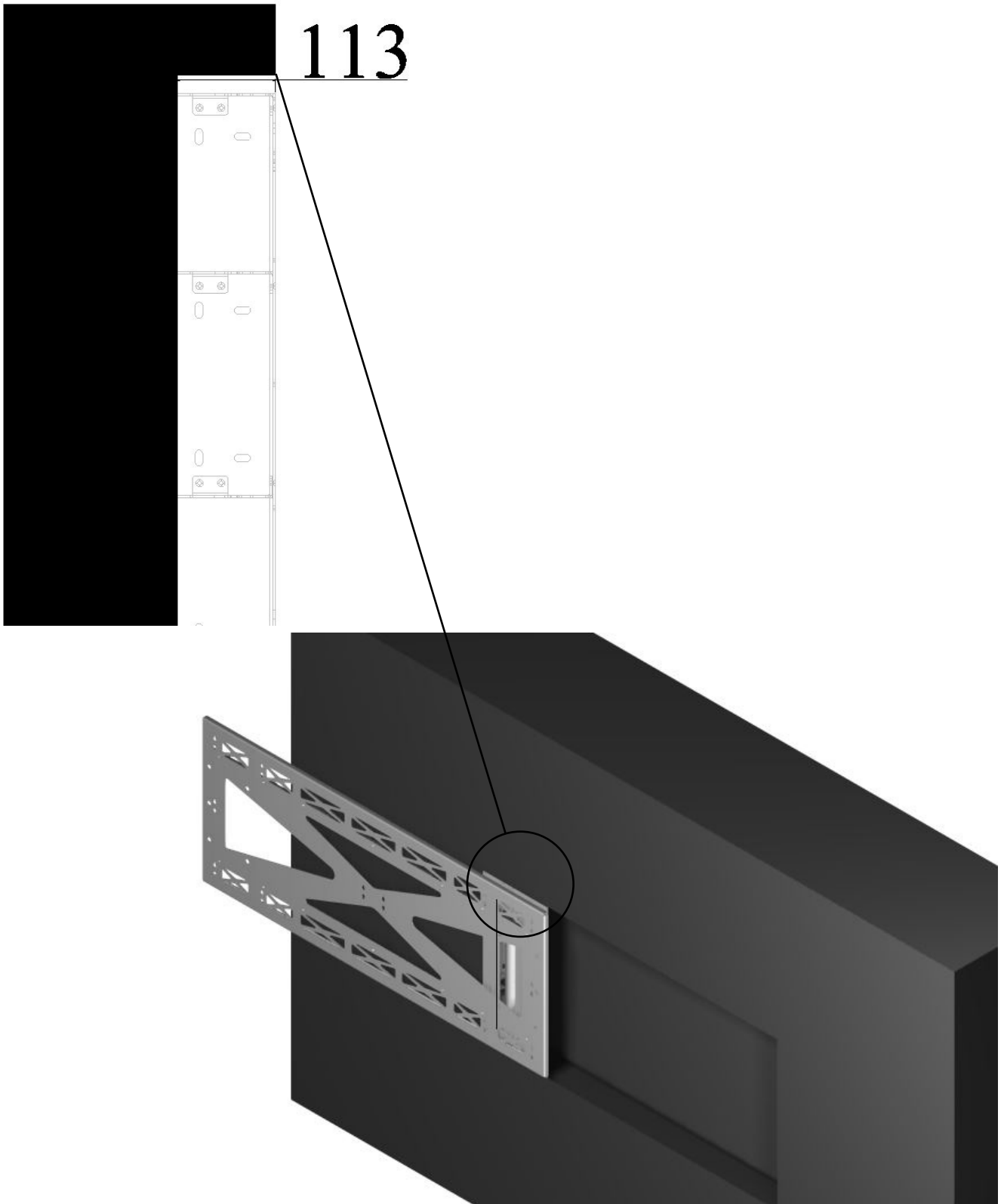
fig. 3

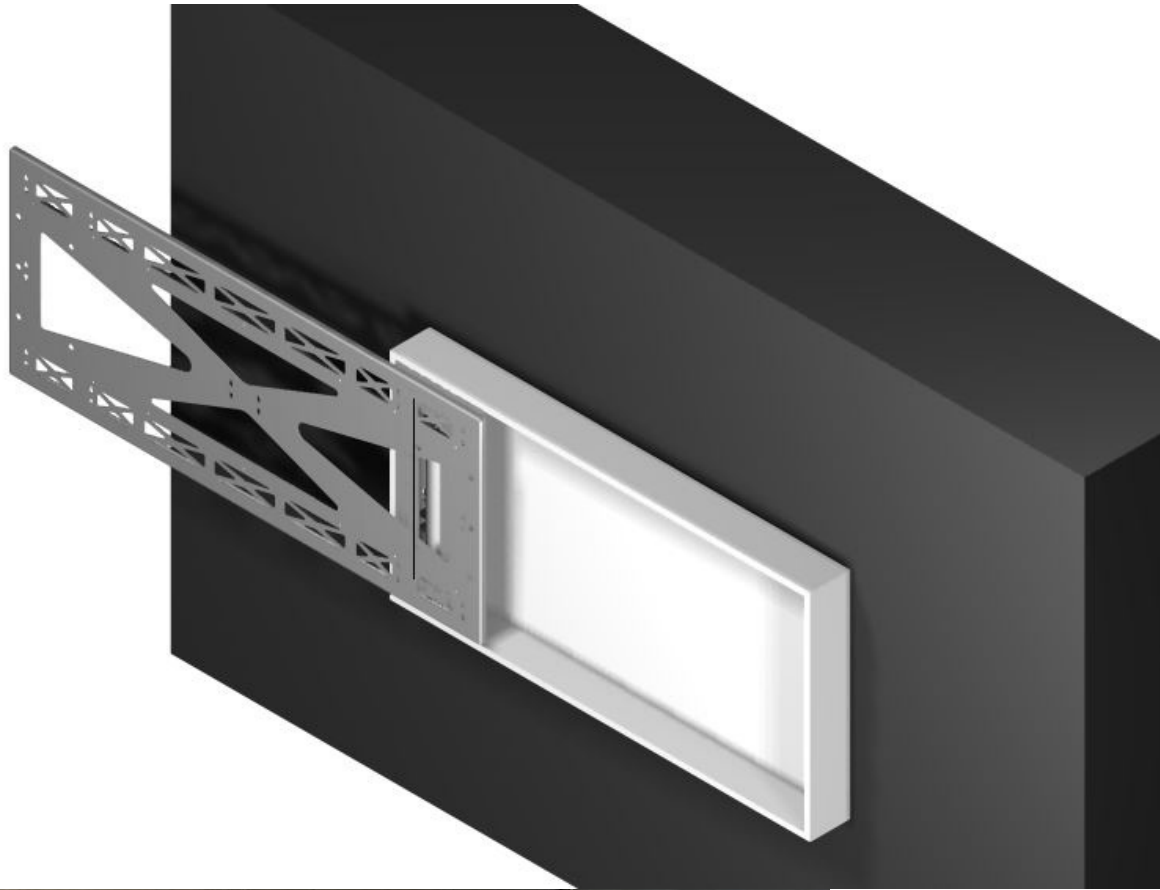




Product integration niche and wall installation:

The wall niche section in which the Picture lift is mounted must have a minimum depth of 113mm. It is important that you provide an inspection opening that allows you to get to the control and drive of the Picture lift in the event of a fault.







Fault diagnosis:

If your Flatlift does not work properly please check the following points:

Flatlift does not move

Is the power cord connected to the control box?

- > Check the mains connection
Are all plugs correctly plugged into the control box? (ATTENTION, incorrectly inserted plugs can damage the system)
- > Check all connections
Is damage to the cables, the control box, the handheld transmitter or the Flatlift visible?
- > Damaged components need to be replaced, please contact us
The Flatlift stops and can only be moved in the opposite direction
- > Is your Flatlift fully extended?
- > Image too heavy?
- > Possibly radio channel deleted!
- > Programming error on the room control!
- > Endpoints wrongly set!

Have you equipped your Flatlift with a too heavy picture?

- > Relieve your Flatlift and try again
Is the radio transmitter transmitting?
- > If necessary, replace the battery of the remote control
Does the receiver receive?
- > When operating the radio transmitter, a "click" should be heard from the relays on both channels.
(If not, delete channels and re-learn them, see page 8 + 9)

Jerky / stuttering process of the lift?

- > Please check if a radio source is transmitting 433 Mhz in the vicinity of your house
(possible sources of interference: garage door opener, baby monitor, alarm system or intercom)

With a radio interference source you have to convert to a frequency of 868 MHz!
Free conversion from 433 Mhz to 868 Mhz is only possible within the first 7 days from the delivery date. If this point is available to you, please contact us.

If you have a problem during commissioning or have a problem, you can contact us by phone or email: Customer Service:

By Email: service@flatlift.de

By phone during our service hours from 8:30 am to 4:30 pm (CET) at +49 (0) 62 41 - 30 56 00

Always have the following information ready for us or email us with:

- > your customer number
- > invoice number or delivery note number
- > Date of purchase of your Flatlift
- > Name of your Flatlift system