

Operating manual Split Panel 32"



-> K.01 Introduction

-> K.02 Properties

-> K.03 Product dimensions

-> K.04 Initial Setup

Setup P.06
Figures P.07

-> K.05 Product control

Transmitter setup P.08
Receiver Reset P.10
Connection to smart home P.10
Siemens Logo PLC control S.11

-> K.06 Product integration

-> K.07 Diagnosis

-> K.08 Imprint



Intended Use

The product is designed for moving a picture to the side. All company names and product names are trademarks of their respective owners. All rights reserved.

The scope of delivery may vary depending on the product and the equipment series. Please check the completeness of the delivery and notify us within 7 days of receipt, if the delivery is not complete.

Safety and hazard warnings

Please read this chapter carefully and follow all listed instructions. This ensures reliable operation and a long service life of your lift system. Keep the operating instructions in a safe place.

Damage caused by non-observance of these operating instructions invalidates the guarantee! For consequential damages we accept no liability. In case of property damage or personal injury caused by improper handling or non-observance of the safety instructions, we assume no liability! In such cases, any warranty claim expires.

- > For safety reasons, the unauthorized conversion and / or alteration of the product is not permitted. Do not dismantle it.
- > The product is not a toy and does not belong in the hands of children.
- > The product must not be damp or wet.
- > Do not leave the packing material careless, children could choke in the worst case if swallowed.
- > Dropping from a low height will damage the product.
- > Before using for the first time, please check that it is possible for the Flatlift to move in and out, including the mounted Picture set, and ensure a collision-free ride.

The quality

We have focused our attention on high functionality, ease of use, safety and reliability in the choice of components.

We thank you for your trust in our Flatlift brand products.

Through individual customer care we support you during your installation.



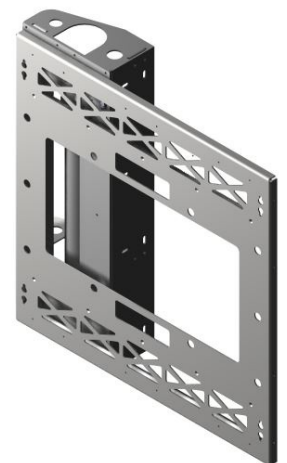
Characteristics:

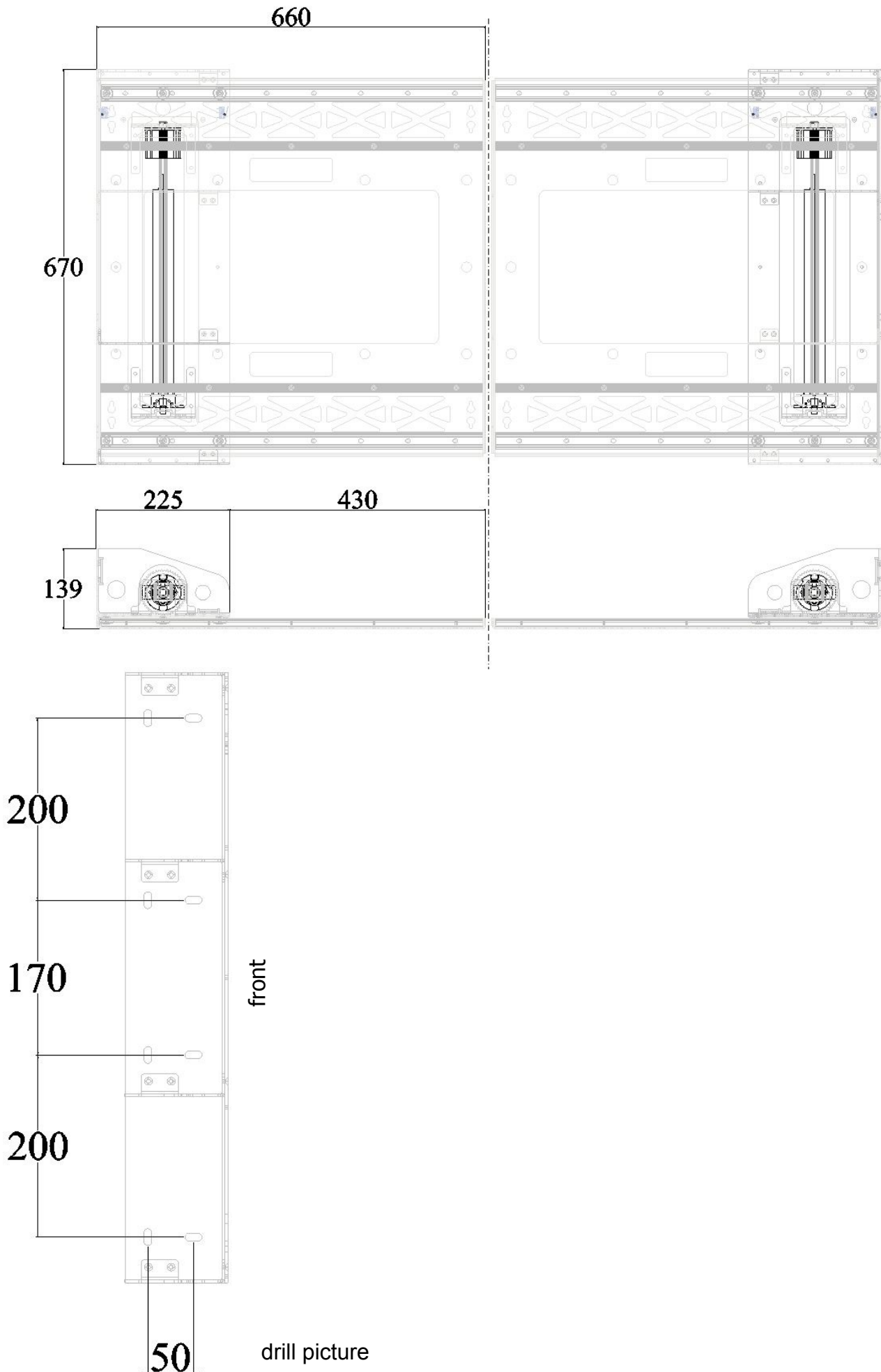
- > Installation dimensions Flatlift
W = 1320mm D = 139mm H = 670mm
- > movement 860mm
- > lifting speed 20mm / sec
- > TV weight max. 20kg / 200N per wing
- > TV size 32" (inches)
(maximum possible TV size in mm: W =840, H =*, D =*)
- > duty cycle 5%
- > Soft Start / Soft Stop
- > Low noise level
- > ambient temperature + 5 ° C to 40 ° C
- > Connection to room control possible
- > TV limit switch (optional)
- > 230V emergency power supply (optional)

Delivery:

- > Flatlift Split Panel 32"
- > radio receiver
- > Radio hand transmitter
- > Siemens Logo PLU control
- > 230 V power cable (preinstalled)

* not relevant







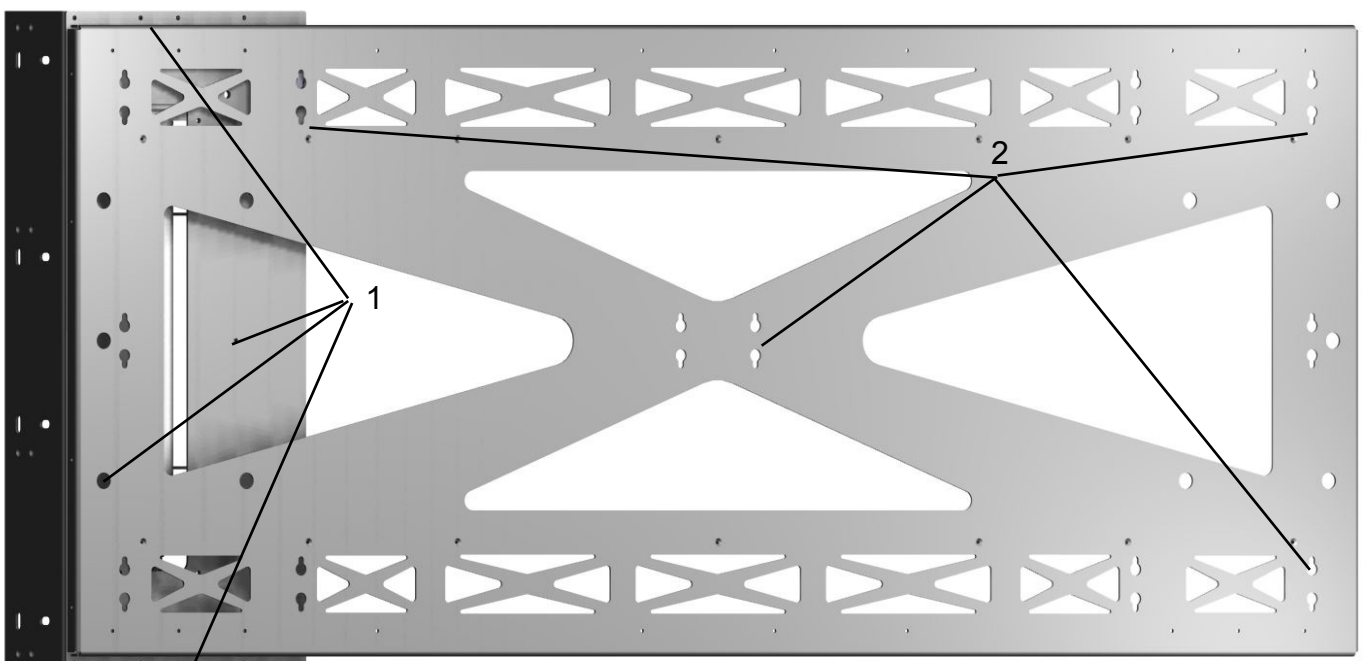
Initial setup:

1. To fasten the split panel loosen the 28 screws (fig. 1 no.1) on the front of the system. Fix your basic units with at least 4 screws, sideways, in the niche. For the hole spacing, you can use the hole pattern (P.05). The front of the base support must be flush with your cutting edge.
2. Place the motor units in the base supports and replace all screws.
3. Connect the connection cables according to the cable labeling with the Siemens Control.
4. Connect the Siemens controller and the radio module to the mains voltage.
5. Open the system by pressing the "left" button on the remote control (P.07 Fig. 1).
6. Mount her picture.
7. Close the lift by pressing the "right" button on the remote control.
8. It may happen that the lift does not open or close completely because the systems are only preset at the factory. This can be set on the drive (P.07 Fig.3). Use the supplied adjustment key for this purpose. On the drive, you can see which of the two set screws is in the closed position. Turn the adjustment screw on the actuator in the direction indicated to adjust the end point. Press the "left" key to open the system a bit and then the "right" key to close it again. The end positions are monitored by position switches of the Siemens controller. If necessary, this process must be repeated.
9. You can attach the wall panel or picture to the keyhole cutouts (2).

You can also set the "Open" position using the same method. Use the other adjusting screw for this purpose.

When the positions are set, the lift is ready for use.

fig. 1



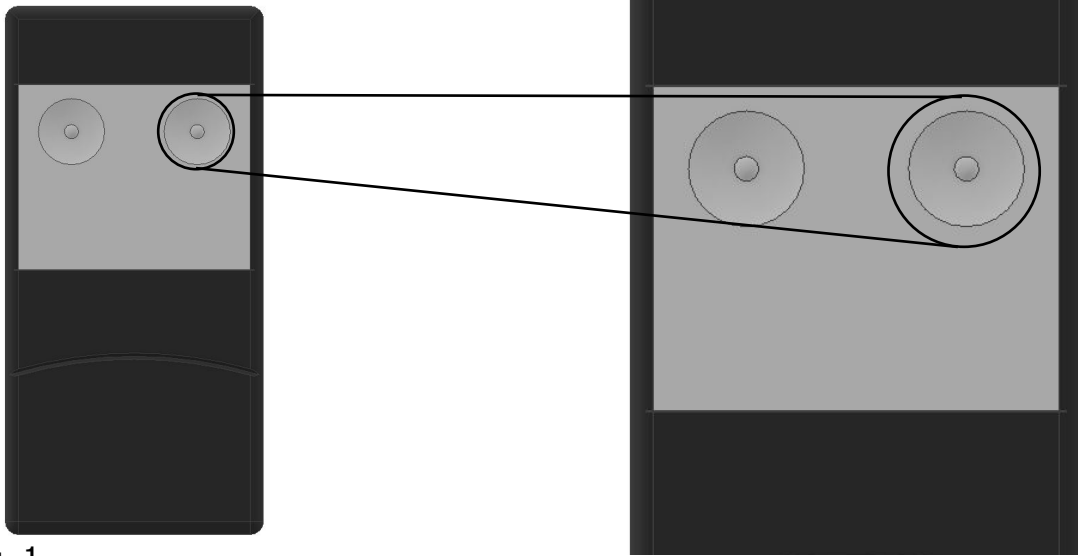


fig. 1

fig. 3

In the picture you can see the adjusting screws. The white screw is for turning upwards. If you now turn the white screw in the direction of "+" (clockwise), the travel becomes larger. If you turn in the direction of "-" it becomes smaller.





Teaching in the hand transmitter:

You can get additional handheld transmitters for your system.
Since the transmitters are coded, you must teach them in.

1. Remove the cover (Fig.11 No.1) on the radio receiver to access the programming buttons.
2. Press the left button (Fig.11 No.2). An LED (Fig.11 No.3) flashes slowly.
3. While holding down the programming button, press the first button on the handheld transmitter at the same time (Fig.12 No.4). The LED (Fig.11 No.3) now flashes quickly after the hand transmitter recognition.
4. Release all buttons.
5. To read in the second channel, repeat the process from step 2 using the second button on the handheld transmitter (Fig.12 No. 5).

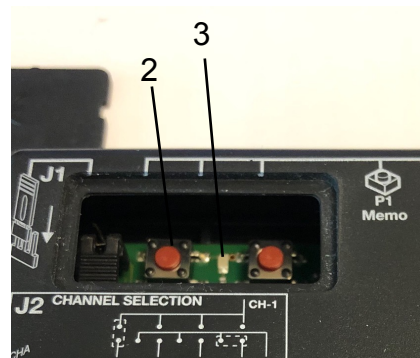
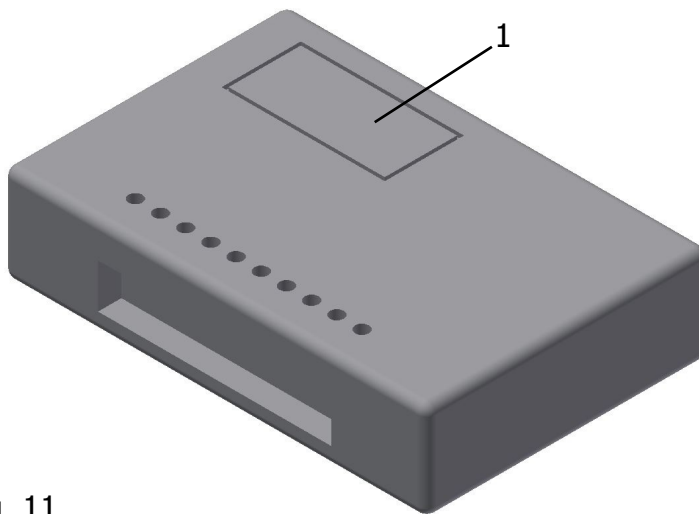


fig. 11

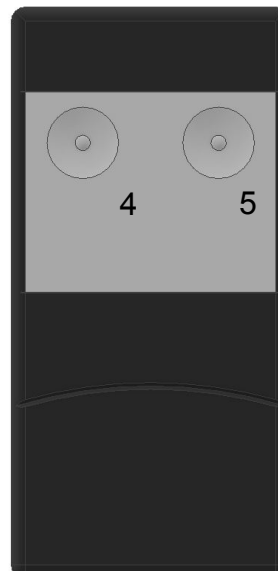


fig. 12

! Important ! Please only with the left programming button learn
The right button is for deleting.



If your handheld transmitter has been successfully read in, if you press the button to send a quiet Hear click in the receiver.

With a handheld transmitter with four radio channels, this is Operation with the top two buttons on radio module 1 and performed with the lower two on module 2.

Please note that the slider on the right side of the Hand transmitter (Fig.13 No.6) is in the lowest position.

The jumper position should also be checked.

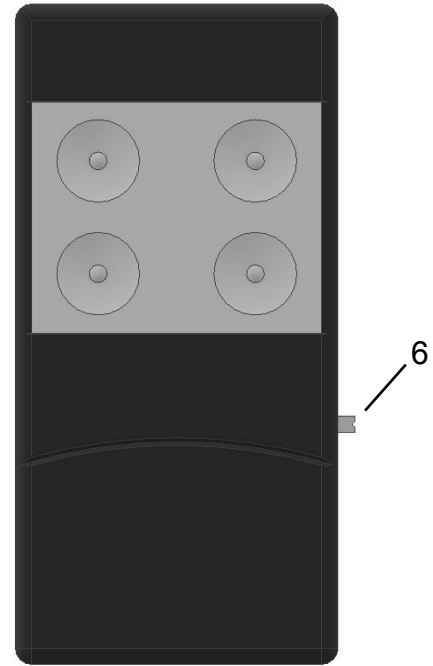
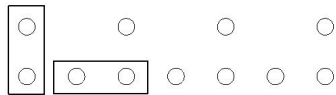


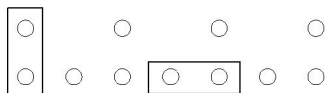
fig. 13

Jumperstellung



2-Kanal

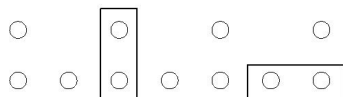
Jumperstellung



4-Kanal

Funk 1

Jumperstellung



4-Kanal

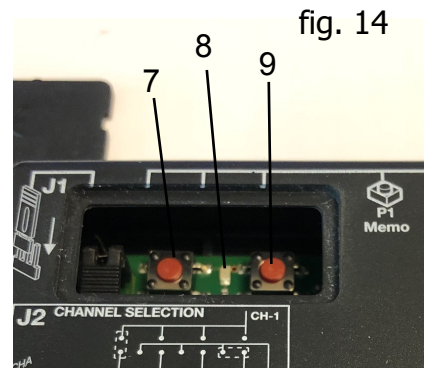
Funk 2



Reset the radio receiver:

It can happen that the stored transmitter codes in the receiver are lost. In this case, the recipient must be deleted.

1. Remove the cover (p.09 Fig.11 No.1) on the radio receiver to access the programming button.
2. Simultaneously press both programming buttons (fig. 14 no.7 + 9) until the LED (Fig.14 No.8) flashes quickly. This is the sign of the successful deletion.
3. Now teach your handheld transmitter back in. (See page 09)



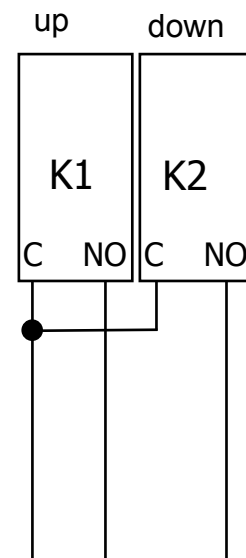
Connection to a room control:

You can connect your Flatlift to a room control if it has 2 relay outputs with floating contacts. These relays must be operated for a programmable period of time.

- 1) Disconnect the radio receiver from the mains.
- 2) Disconnect the cables (terminals 2 - 4) on the radio receiver (fig. 4).
- 3) Now connect the blue and red wires to one of the relay outputs (lower control command Flatlift).
- 4) Bring the blue wire to the second relay output and connect the green wire to this relay output (lift the flatlift).

You can also use a new cable with RJ45 plug. You can use the following pin assignment for this.

- Pin 4 & 5 for up
- Pin 4 & 8 for down





Your Flatlift system is equipped with a Siemens logo PLC control. This controls the sequence of the individual movements. In addition, various settings can be made on the controller to adjust the lift system or to check the current status of the system.

Navigation in the menu of Siemens Logo:

You can use the cursor keys on the logo control to move through the information and programming menu. When the controller is started, the display will show a display with the flatlift, lift model and version number of the software. To move around the menu, press the **"Down"** cursor once. The display changes to the date / time display. To check the **status of the system**, press the cursor **"Right"** once. The display should show (page **1/9**). The page is displayed in the upper right corner of the display. This page displays the **Inputs** of the system. Depending on the lift system, certain inputs must be switched (**black background**) for the system to work properly. The following list can be used to test the Flatift:



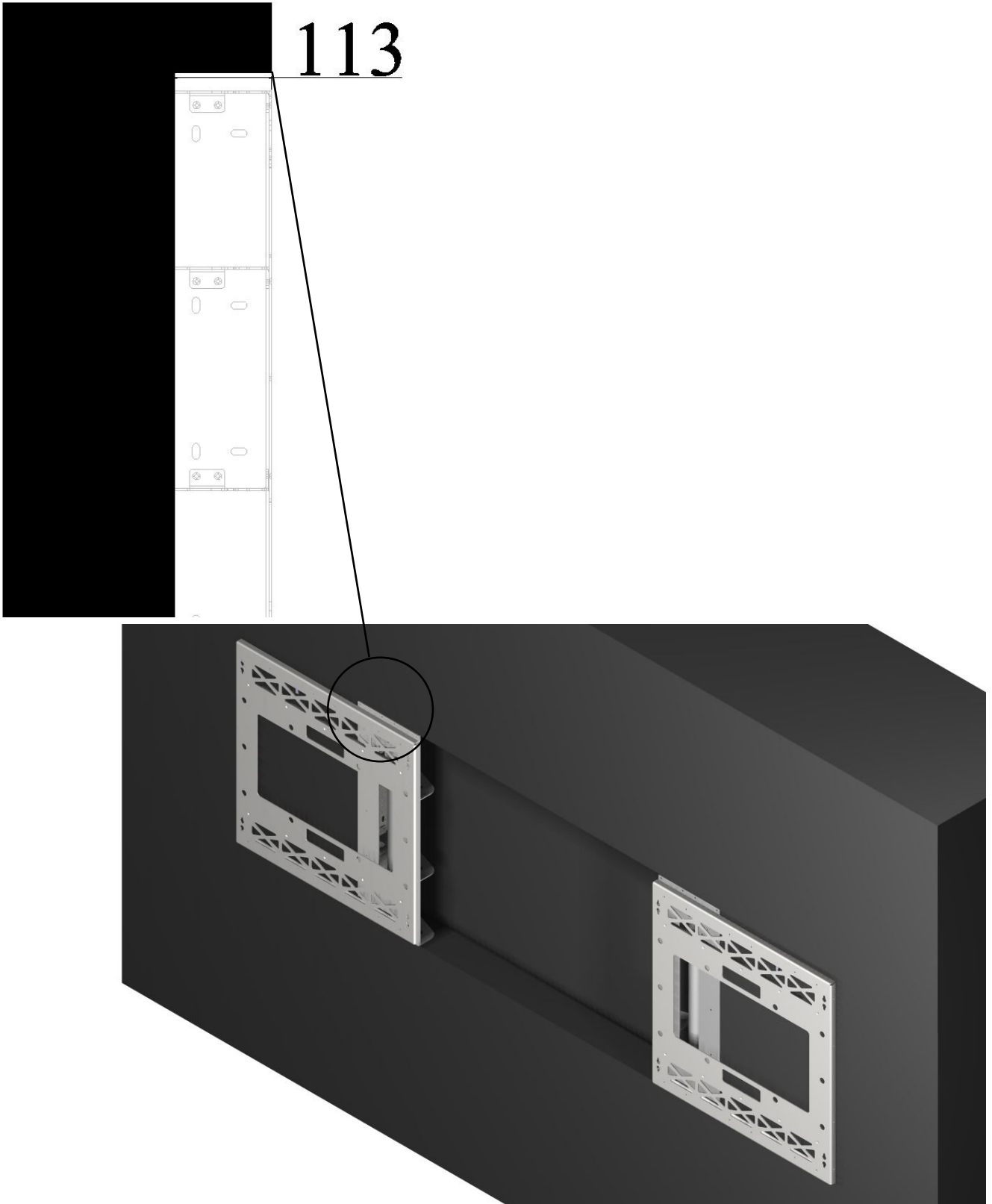
Inputs:

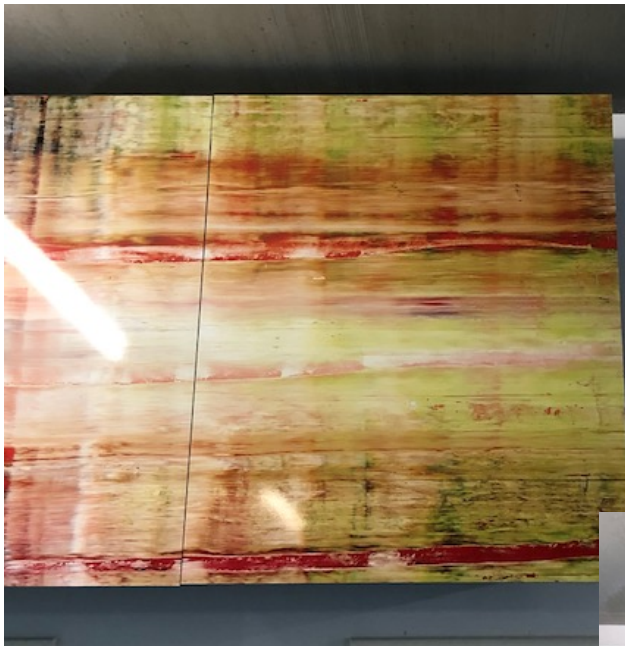
- I-1: Signal Open: Can be used to check if the signal "OPEN" is present. (For example, Startzustand: aus if the button "OPEN" is pressed on the hand-held transmitter.
- I-2: Signal Close: Can be used to check if the signal "CLOSE" is present. (For example, Startzustand: aus if the key "CLOSE" is pressed on the hand-held transmitter.
- I-3: Signal left open: Can be used to check if the "left wing open" signal is present. Startzustand: aus
- I-4: Signal right open: Can be used to check if the "right wing open" signal is present. Startzustand: aus
- I-5: Signal left closed: Can be used to check if the "left wing closed" signal is present. Startzustand: ein
- I-6: Signal right closed: Can be used to check if the "right wing closed" signal is present. Startzustand: ein



Product Integration Niece and Effort Installation:

The wall section into which the split panel is mounted must have a minimum depth of 113mm. It is important that you provide an inspection opening that allows you to access the controller and the drives of the split panel in the event of a malfunction.







Fault diagnosis:

If your Flatlift System does not work properly please check the following points:

Flatlift does not move

Is the power cord connected to the control box?

- > Check the mains connection
Are all plugs correctly plugged into the control box? (ATTENTION, incorrectly inserted plugs can damage the system)
- > Check all connections
Is damage to the cables, the control box, the handheld transmitter or the Flatlift visible?
- > Damaged components need to be replaced, please contact us
The Flatlift stops and can only be moved in the opposite direction
- > Is your Flatlift fully extended?
- > top material too heavy?
- > Possibly radio channel deleted!
- > Programming error on the room control!
- > Endpoints wrongly set!

Have you equipped the Flatlift with a too heavy TV or top material?

- > Relieve the Flatlift and try again
Is the radio transmitter transmitting?
- > If necessary, replace the battery of the remote control
Does the receiver receive?
- > When operating the radio transmitter, a "click" should be heard from the relays on both channels.
(If not, delete channels and re-learn them, see page 8 + 9)

Jerky / stuttering process of the lift?

- > Please check if a radio source is transmitting 433 Mhz in the vicinity of your house
(possible sources of interference: garage door opener, baby monitor, alarm system or intercom)

With a radio interference source you have to convert to a frequency of 868 MHz!
Free conversion from 433 Mhz to 868 Mhz is only possible within the first 7 days from the delivery date. If this point is available to you, please contact us.

If you have a problem during commissioning or have a problem, you can contact us by phone or email: Customer Service:

By Email: service@flatlift.de

By phone during our service hours from 8:30 am to 4:30 pm (CET) at +49 (0) 62 41 - 30 56 00

Always have the following information ready for us or email us with:

- > your customer number
- > invoice number or delivery note number
- > Date of purchase of your Flatlift
- > Name of your Flatlift system