



DPI and Desk Connect™ App User Manual

Contents

Preface	4
Important safety information	5
Informations de sécurité importantes	5
LINAK application policy.....	8
EU Declaration of Conformity	9
UK Declaration of Conformity	10
Manufacturer's declaration.....	11
The DESKLINE® product.....	13
Warranty	13
Maintenance	13
Cleaning the desk panel	13
Products	14
Installation	15
Important notes.....	15
Placing the DPI	15
Mounting the DPI	16
Operation	17
Desk Connect™ App	18
Downloading the app	18
Getting started	19
Onboarding flow	20
Operation via the app	22
Settings	24
App.....	24
Desk settings.....	24
Changing the desk name	24
Adjusting the displayed desk height	25
Setting the desk height limits	26
Setting the language of the DPI display	27
You menu	28
Favourite positions	29
Keylock	30
My desks.....	31
Automatic drive	32
Units	33
Reminders.....	34
More menu	36
App settings.....	36
Support.....	37
About	37

DPI	38
Height	39
Units	39
Favourite positions	39
Limits	40
Restore	40
Exit	40
Accessories and repair	41
Disposal of LINAK products	42
Contacts	43

Preface

Dear User,

We are delighted that you have chosen a LINAK® product.

LINAK systems are high-tech products based on many years of experience in the manufacture and development of actuators, electric control boxes, controls, batteries, accessories and chargers.

This User Manual does not address the end user. It is intended as a source of information for the equipment or system manufacturer only, and it will tell you how to install, use and maintain your LINAK electronics. The manufacturer of the end product has the responsibility to provide a User Manual, where relevant safety information from this manual is passed on to the end user.

We are convinced that your LINAK product/system will give you many years of problem-free operation.

Before our products leave the factory, they undergo both function and quality testing. Should you, nevertheless, experience problems with your product/system, you are always welcome to contact your supplier.

LINAK subsidiaries and some distributors situated all over the world have authorised service centres, which are always ready to help you. Locate your local contact information on the back page.

LINAK provides a warranty on all products, see [Warranty](#).

This warranty, however, is subject to correct use in accordance with the specifications, maintenance being done correctly, and any repairs being carried out at a service centre, which is authorised to repair LINAK products.

Changes in installation and use of LINAK systems can affect their operation and durability. The products may only be opened by authorised personnel.

This User Manual has been written based on the present technical knowledge. LINAK reserves the right to carry out technical modifications and keeps the associated information updated.

LINAK A/S

Important safety information

Safe use of the system is possible only when the user manual are read completely and the instructions contained are strictly observed.

Failure to comply with instructions marked with the "NOTICE" symbol may result in serious damage to the system or one of its components.

Read all instructions before using this product.

Important safety information on LINAK® products can be found under the following headings:



DANGER

Failure to comply with these instructions will result in severe personal injury.



WARNING

Failure to comply with these instructions may result in severe personal injury.



CAUTION

Failure to comply with these instructions can result in minor personal injury.



NOTICE

Failure to comply with these instructions can result in property damage.

READ AND SAVE THESE INSTRUCTIONS

Informations de sécurité importantes

Une utilisation sûre du système n'est possible que lorsque le manuel d'utilisation est lu dans son intégralité et que les instructions qu'il contient sont strictement respectées.

Le non-respect des instructions marquées du symbole "AVIS" peut entraîner de graves dommages au système ou à l'un de ses composants.

Lisez toutes les instructions avant d'utiliser ce produit.

Des informations de sécurité importantes sur les produits LINAK® peuvent être trouvées sous les rubriques suivantes :



DANGER

Le non-respect de ces instructions entraînera des blessures graves.



AVERTISSEMENT

Le non-respect de ces instructions peut entraîner des blessures graves.



AVERTIR

Le non-respect de ces instructions peut entraîner des blessures corporelles mineures.



AVIS

Le non-respect de ces instructions peut entraîner des dommages matériels.

LIRE ET CONSERVER CES INSTRUCTIONS

This device complies with part 15 of the FCC Rules. Operation is subject to the following two conditions:

- (1) This device may not cause harmful interference, and**
- (2) This device must accept any interference received, including interference that may cause undesired operation**

- **Statement – for all intentional and unintentional radiators:**

Changes or modifications not expressly approved by the party responsible for compliance could void the user's authority to operate the equipment.

- **Statement for digital devices for Class B:**

NOTE: This equipment has been tested and found to comply with the limits for a Class B digital device, pursuant to part 15 of the FCC Rules. These limits are designed to provide reasonable protection against harmful interference in a residential installation. This equipment generates, uses and can radiate radio frequency energy and, if not installed and used in accordance with the instructions, it may cause harmful interference to radio communications. However, there is no guarantee that interference will not occur in a particular installation. If this equipment does cause harmful interference to radio or television reception, which can be determined by turning the equipment off and on, the user is encouraged to try to correct the interference by one or more of the following measures:

- Reorient or relocate the receiving antenna.
- Increase the separation between the equipment and the receiver.
- Connect the equipment into an outlet on a circuit different from that to which the receiver is connected.
- Consult the dealer or an experienced radio/ TV technician for help.

This device contains licence-exempt transmitter(s)/receiver(s) that comply with Innovation, Science and Economic Development Canada's licence-exempt RSS(s). Operation is subject to the following two conditions:

1. This device may not cause interference.
2. This device must accept any interference, including interference that may cause undesired operation of the device.

L'émetteur/récepteur exempt de licence contenu dans le présent appareil est conforme aux CNR d'Innovation, Sciences et Développement économique Canada applicables aux appareils radio exempts de licence. L'exploitation est autorisée aux deux conditions suivantes:

1. L' appareil ne doit pas produire de brouillage;
2. L' appareil doit accepter tout brouillage radioélectrique subi, même si le brouillage est susceptible d' en compromettre le fonctionnement.

Labeling requirements:

This Class B digital apparatus complies with Canadian ICES-003.

Cet appareil numérique de la classe B est conforme à la norme NMB-003 du Canada.



WARNING

- This appliance can be used by children aged from 8 years and by persons with reduced physical, sensory or mental capabilities or lack of experience and knowledge if they have been given supervision or instruction concerning use of the appliance in a safe way and understand the hazards involved.
- Children shall not play with the appliance. Cleaning and user maintenance shall not be made by children without supervision.

Only for US and Canadian markets

- Persons who do not have the necessary experience or knowledge of the product/products must not use the product/products. Besides, persons with reduced physical, sensory or mental abilities must not use the product/products, unless they are under surveillance or they have been thoroughly instructed in the use of the apparatus by a person who is responsible for the safety of these persons.
- Moreover, children must be under surveillance to ensure that they do not play with the product.
- It is the operator's responsibility to ensure that there is free space for the application to move without risk for the operator or bystanders before operating the application.



AVERTISSEMENT

- Cet appareil peut-être utilisé par des enfants âgés de 8 ans et plus, ainsi que les personnes dont les capacités physiques, sensorielles ou mentales sont réduites ou ayant un manque d'expérience et de connaissance si elles ont bénéficié d'une surveillance ou d'instructions concernant l'utilisation de l'appareil en toute sécurité et compris les risques encourus.
- Les enfants ne doivent pas jouer avec l'appareil. Le nettoyage et l'entretien ne doivent pas être réalisés par des enfants sans surveillance

Seulement pour les marchés américains et canadiens

- Les personnes qui n'ont pas l'expérience ou les connaissances nécessaires sur le ou les produit(s) ne doivent pas le ou les utiliser. Par ailleurs, les personnes ayant des capacités physiques, sensorielles ou mentales réduites ne doivent pas utiliser le ou les produit(s), sauf si elles sont sous surveillance ou ont suivi une formation approfondie de l'utilisation de l'appareil par l'individu responsable de la sécurité de ces personnes.
- De plus, les enfants doivent-être sous surveillance afin de s'assurer qu'ils ne jouent pas avec le produit.
- Il est de la responsabilité de l'opérateur de s'assurer qu'il y a de l'espace libre pour que l'application puisse se déplacer sans risque pour l'opérateur ou les passants avant d'utiliser l'application..



CAUTION

Load on the table

Risk of injury to persons and of malfunction

- Do not overload the frame.
- Place heavy load centrally on the desk.
- Do not use the desk as a work bench.
- Do not use the frame for lifting persons.
- Do not stand on the desk while it is driving up or down.

Repairs



WARNING

Opening the product

Risk of injury to persons

- Do not open the DESKLINE® product.

In order to avoid the risk of malfunction, all DESKLINE® repairs must only be carried out by authorised LINAK workshops or repairers, as special tools must be used and special gaskets must be fitted. Lifting units under warranty must also be returned to authorised LINAK workshops.

LINAK application policy

The purpose of the application policy is to define areas of responsibilities in relation to applying a LINAK product defined as hardware, software, technical advice, etc. related to an existing or new customer application.

LINAK products, as defined above, are applicable for a wide range of applications within the Medical, Furniture, Desk and Industry areas. Yet, LINAK cannot know all the conditions under which LINAK products will be installed, used, and operated, as each individual application is unique.

The suitability and functionality of the LINAK product and its performance under varying conditions (application, vibration, load, humidity, temperature, frequency, etc.) can only be verified by testing, and shall ultimately be the responsibility of the LINAK customer using any LINAK product.

LINAK shall be responsible solely that the LINAK products comply with the specifications set out by LINAK and it shall be the responsibility of the LINAK customer to ensure that the specific LINAK product can be used for the application in question.

EU Declaration of Conformity



EU DECLARATION OF CONFORMITY

LINAK A/S
Smedevænget 8
DK - 6430 Nordborg

hereby declares under our sole responsibility that LINAK actuator system items

Wireless accessory: BLE2LIN

Wireless handset: HC05BL, HC10BL, HC1ABL, HC10ECO, HC2xBL, HC30BL, HC40BL, BP10BL, DPG1B, DPG1C, DPG1M, DPI-C

complies with the **Radio Equipment Directive (RED) 2014/53/EU** (*OJ L 153, 22.5.2014, p. 62–106*) according to the standard:

Art.3.1 (a) Safety:
EN 62368-1:2014+A11:2017 (Harmonized to LVD)

Art.3.1 (a) Health:
EN 62479:2010 (Harmonized to LVD)
EN 50663:2017

Art. 3.1(b) EMC:
ETSI EN 301 489-1 V2.2.3;
ETSI EN 301 489-17 V3.2.4

Art. 3.2 Radio:
ETSI EN 300 328 V2.2.2

complies with Directive **2011/65/EU** of the European Parliament and of the Council of 8 June 2011 on the restriction of the use of certain hazardous substances in electrical and electronic equipment (*OJ L 174, 1.7.2011, p. 88–110*) and Directive **2015/863** (*OJ L 137, 4.6.2015, p. 10–12*) (amending Annex II to Directive 2011/65/EU) according to the standard:

EN IEC 63000:2018

Nordborg, 2023-05-02

LINAK A/S
Dragan Macura
Regulatory Compliance Manager
Deskline and Homeline Segments
Authorized to compile the relevant technical documentation

Original Declaration 

UK Declaration of Conformity



UK DECLARATION OF CONFORMITY

LINAK A/S
Smedevænget 8
DK - 6430 Nordborg

hereby declares under our sole responsibility that LINAK Actuator System items:

Wireless accessory: BLE2LIN

Wireless handset: HC05BL, HC10BL, HC1ABL, HC10ECO, HC2xBL, HC30BL HC40BL, BP10BL, DPG1B, DPG1C, DPG1M, DPI-C

Complies with **Radio Equipment Regulations 2017** according to following standards:

Safety Reg. 6(1)(a):
BS EN 62368-1:2014+A11:2017

Health Reg. 6(1)(a):
BS EN 62479:2010;
EN 50663:2017

EMC Reg. 6(1)(b):
ETSI EN 301 489-1 V2.2.3;
ETSI EN 301 489-17 V3.2.4

Radio Reg. 6(2):
ETSI EN 300 328 V2.2.2

complies with **The Restriction of the Use of Certain Hazardous Substances in Electrical and Electronic Equipment Regulations 2012** according to the standard:

BS EN IEC 63000:2018

Nordborg, 2023-05-02

LINAK A/S
Dragan Macura
Regulatory Compliance Manager
Deskline and Homeline Segments
Authorized to compile the relevant technical documentation

Original Declaration 

Manufacturer's declaration

DECLARATION OF INCORPORATION OF PARTLY COMPLETED MACHINERY

LINAK A/S
Smedevænget 8
DK - 6430 Nordborg

Herewith declares that LINAK DESKLINE® products as characterized by the following models and types:

Control Boxes: CBD6Sa000b0A-c09 (Where -a: can be P, C or H, -b: can be 2, 3 or 4 and -c: can be 0 or 7)

Linear Actuators: LA31

Built in actuator(s): DB5, DB6, DB14,

Lifting Columns: DL1A, DL4S, DL2, DL5, DL6, DL7, DL8, DL9, DL10, DL11, DL12, DL14, DL15, DL16, DL17, DL18, DL19, DL20, DL21, LC1

Desk Panels: DPA, DPB, DPH, DPF1K, DPF1M, DPF2K, DPF3K, DPF1C, DPF1D, DPF1U, DPF1W, DPF4T, DPG1K, DPG1M, DPG1B, DPG1C, DPT, DP1V01, DP1CS, DP1K, DP1U, DP2K, DP3K, DPN, DPWA, DPI-K, DPI-C

Accessories: BLE2LIN002, BLE2LIN003, DESK SENSOR 1, USB2LIN, DCConnector

complies with the following parts of the Machinery Directive 2006/42/EC, ANNEX I, *Essential health and safety requirements relating to the design and construction of machinery*:

- 1.1.2 a) Special use*
- 1.1.2 b) Selection of the most appropriate methods*
- 1.1.2 c) Foreseeable misuse*
- 1.1.2 d) Operator constrains due to the use of personal protective equipment*

1.1.3 Materials and products*

- 1.2.1 Safety and reliability of control systems
- 1.2.2 Control devices. Shape, readability, overview*
- 1.2.3 Starting*
- 1.2.4 Stopping*

- 1.5.1 Electricity supply
- 1.5.10 Radiation. EMC. Emission of electromagnetic radiation, X-rays, γ -rays*
- 1.5.11 External radiation*

*need to be further evaluated in the end product

We confirm that prior to market introduction the relevant technical documentation is compiled in accordance with part B of Annex VII and the assembly instruction pursuant to Annex VI.

This documentation or part hereof will be transmitted by post or electronically to a reasoned request by the national authorities.

The products mentioned in this document are to be combined for use in height adjustable furniture.

This partly completed machinery must not be put into service until the final machinery into which it is to be incorporated has been declared in conformity with the provisions of the Machinery Directive 2006/42/EC where appropriate.

Nordborg, 2023-06-23

LINAK A/S
Dragan Macura
Regulatory Compliance Manager
Deskline and Homeline Segments
Authorized to compile the relevant technical documentation

Original Declaration

Use the DPI in an environment with temperature between -10 and +50 °C. Otherwise, the DPI may be damaged. It can be operated at altitudes up to 2000 m.

Hereby, LINA K A/S declares that the radio equipment type DPI is compliant with Directive 2014/53/EU.



The equipment is a Bluetooth® device powered by 9 V DC or 18 V input charged by an RJ45 port.

Operating Frequency Range:
Bluetooth® 2402 - 2480 MHz

The maximum RF Output Power:
-9.81 dBm EIRP

The Bluetooth® word mark and logos are registered trademarks owned by Bluetooth SIG Inc. and any use of such marks and logos by LINA K A/S is under license.

The DESKLINE® product

This DESKLINE product is developed for indoor use in offices.

Do not use it in environments that have to be cleaned with aggressive detergents.

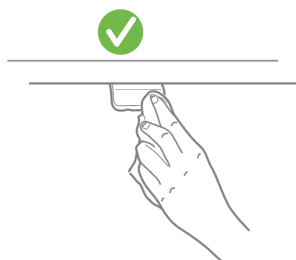
Warranty

This DESKLINE product is subject to warranty pursuant to the terms of LINAK DESKLINE Warranty Paper, available on the LINAK website www.linak.com/warranty.

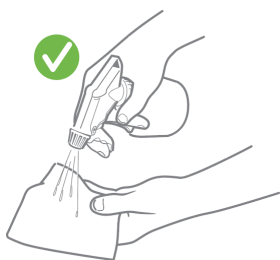
Maintenance

Cleaning the desk panel

Clean your desk panel with a soft damp cloth. Universal cleaning detergents may be used.



For disinfection of the desk panel, use a 70 percent isopropyl alcohol either as a wipe or add a small amount to a soft cloth.

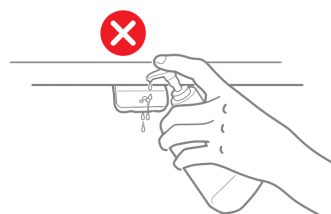
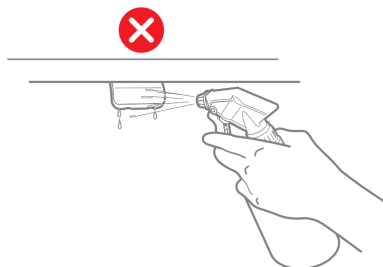


CAUTION

Risk of damaging the desk panel

The desk panel is not a sealed unit and there are electronics inside it.

- Ensure that liquids or moisture does not enter an opening. It may damage the PCB and ruin the desk panel.
- Avoid spraying the cleaning agent or disinfectant directly on the desk panel.



- Cleaning agents and disinfectants must not be highly alkaline or acidic (pH value must be 6 to 8), and they must not contain bleach or chlorine.
- Do not use hand sanitizer gel as a cleaning agent.

Products

Desk Panel DPI1K



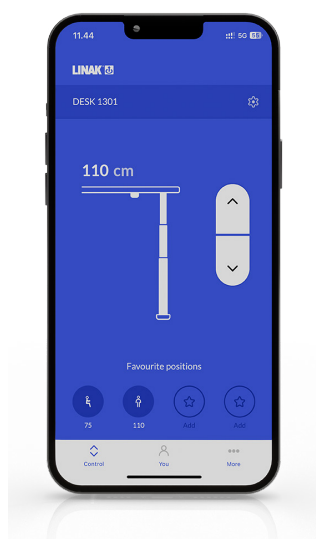
- Up/down drive

Desk Panel DPI1C



- Up/down drive
- Up to four favourite positions
- Bluetooth®
- Display

Desk Connect™ app



- Up/down drive
- Displays actual height
- Up to four favourite positions
- Automatic connection to desk
- Possibility to enable automatic drive
- Possibility to enable keylock
- Works via Bluetooth Low Energy Technology
- Available for iOS and Android smart phones

Installation

Important notes



Always use 4 screws for mounting the DPI.



Always use pan head screws.



Ensure to tighten the screws sufficiently (minimum 1 Nm).
Do not overtighten.



Ensure that the surface on which the DPI is mounted is flat and without any bulges.

Placing the DPI

The drawings below are side view examples of how to position the DPI relative to the edge of the tabletop.

1. Place DPI so it is easy to operate.

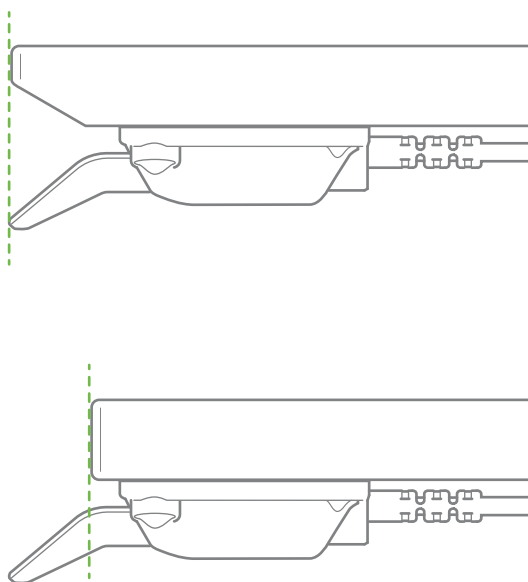


Figure 1 Alignment in proportion to tabletop edge

Front label

The DPI is delivered with the removable front label attached to the paddle.

1. Peel the label off and place it on a visible spot. The information (user guides and product information) is then easily accessible via the QR code.



Figure 2 Removable front label

Mounting the DPI

Preparing the tabletop

We recommend pre-drilling the holes for the DPI to ensure the same aligned position for all desks.



If no holes are pre-drilled, a bulge of wood might occur between the tabletop and the DPI, which causes the DPI not to be tightened sufficiently to the tabletop. This might lead to false triggering of the built-in anti-collision sensor in the DPI.

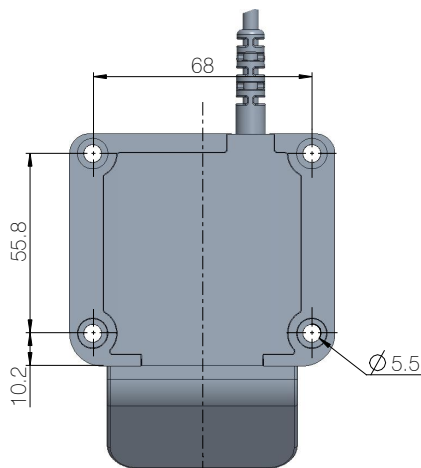
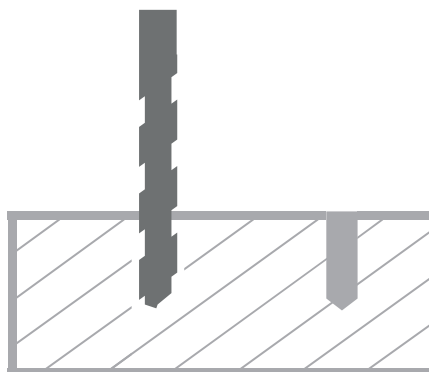
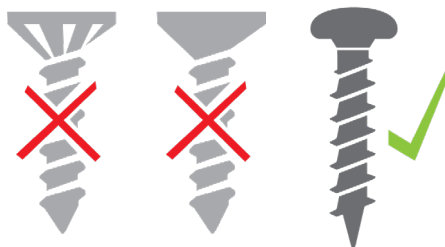


Figure 3 Hole pattern of the DPI

1. Pre-drill holes.



2. Mount the DPI to the tabletop.
Always use 4 x $\varnothing 5$ mm pan head screws (recommended length: 16 mm).



The screws must be fastened sufficiently (minimum 1 Nm) without being over-tightened. It is not possible to state the maximum torque, as this depends on the type of screw, the material of tabletop and whether there are pre-drilled holes or not.

3. Fasten the four screws sufficiently to ensure that the built-in anti-collision sensor functions properly and to prevent the sensor from false triggering.

Operation

Operate the DPI by tilting it.

1. Tilt and hold up DPI to drive desk up, press and hold down DPI to drive desk down.
2. Release DPI when you have reached your requested position.



Figure 4 Tilt and hold the DPI to drive the desk up

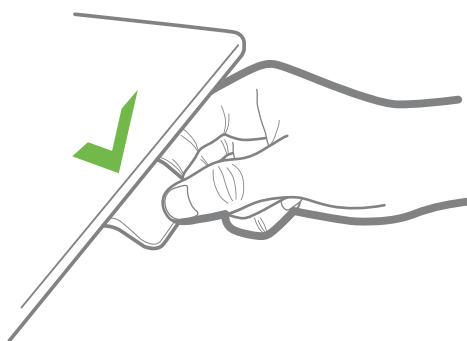


Figure 5 Press and hold the DPI to drive the desk down

DPI1C only:

If favourite positions have been saved and automatic drive is enabled:

Simply double-tap up or down to drive the desk to a favourite position.

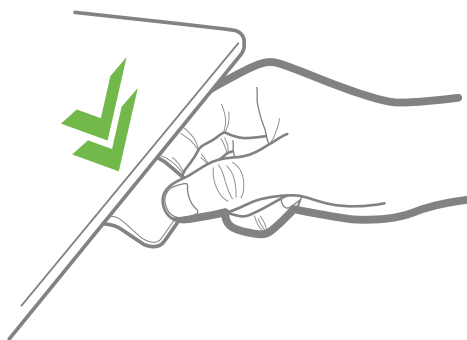
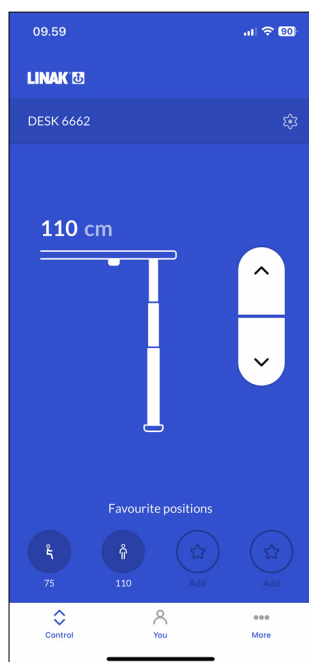


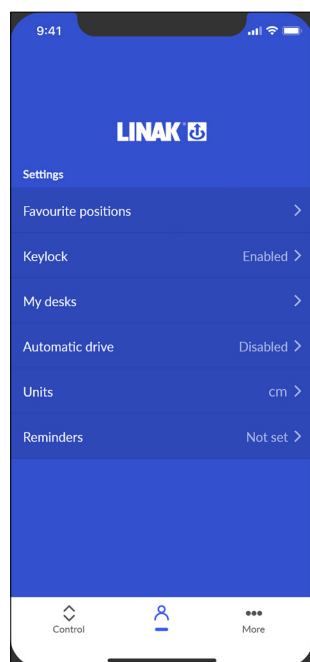
Figure 6 Double-tap the DPI to drive the desk to a pre-set favourite position

Desk Connect™ App

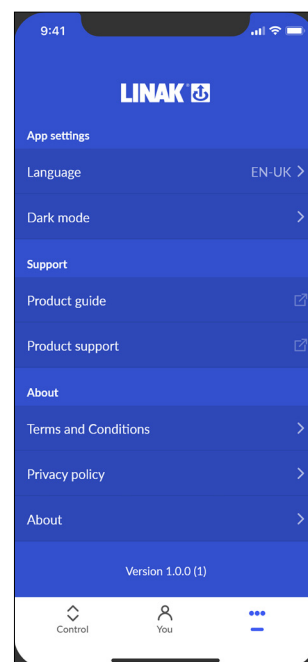
How does the app look



Control



You



More

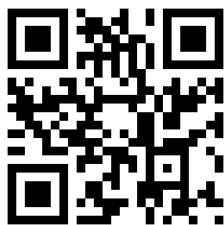
Downloading the app

The app is connected to the desk via Bluetooth® Low Energy technology integrated in the DPI1C.

Download the Desk Connect™ app from Apple App store or Google Play store.



You can also scan the QR code to reach the app:



Apple App Store



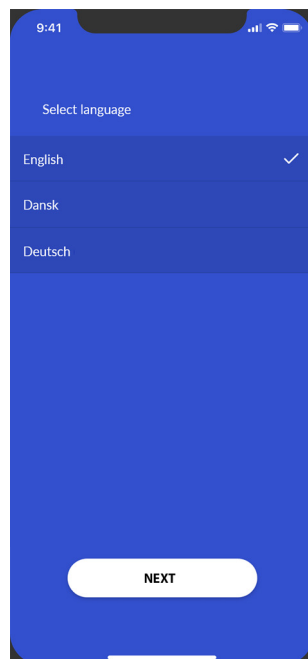
Google Play Store

Getting started

Install the app, open it and allow for Bluetooth® connection (required for the app to function with a DPI1C).

Select app language

When you have allowed Bluetooth® connection, you need to select the preferred language for the app before you press 'CONTINUE'.



Once you have selected the language, press 'NEXT' to get information about what you can use the app for and the benefits of changing posture during the day. Press 'NEXT' again to get to the Terms and Conditions.

Terms and Conditions

Before you can start using the app, you need to agree to the Terms and Conditions for use of the app.

Press 'Read the full Privacy Policy' and 'Read the full Terms and Conditions' to read the terms before pressing 'I AGREE'.

For Android only:

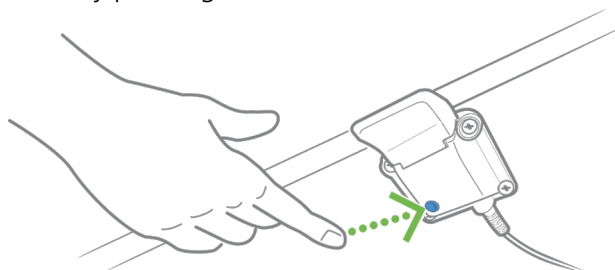


GPS location and Bluetooth® are required for the app to scan for nearby DPIs in pairing mode. Please enable GPS location and Bluetooth® for the pairing to succeed.

Onboarding flow

To pair the app and the desk, the DPI must be in pairing mode

1. Set the DPI in pairing mode by pressing the connect button on the bottom of the DPI for 2 seconds.

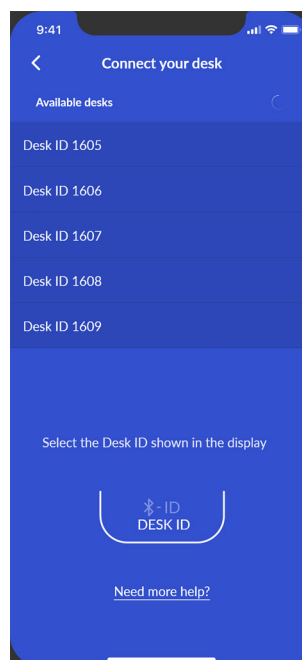
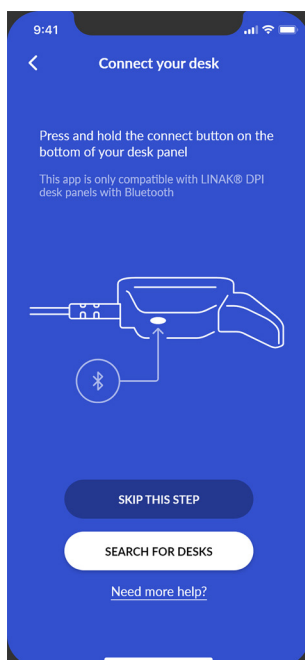


To indicate that the DPI is in pairing mode, the display shows:



All Desk Panels DPI have IDs named 'DESK' followed by a four-digit number.

2. Press 'SEARCH FOR DESKS' to start searching for DPIs in pairing mode and select the relevant desk from the list of available desks and allow pairing.



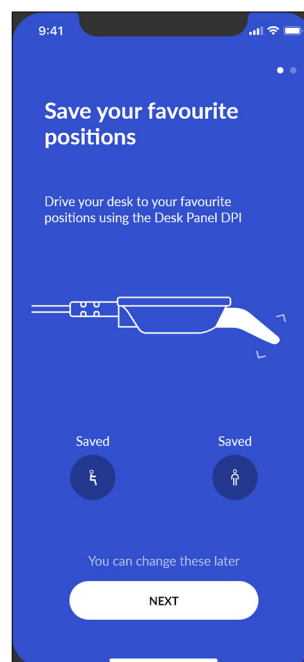
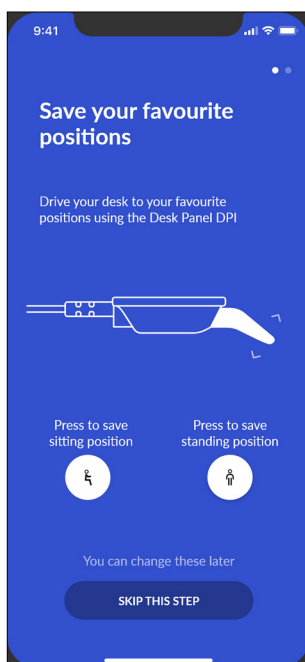
Once the desk and the app are paired, you can set your favourite positions and enable automatic drive; or you can skip these steps.

Saving favourite positions

1. Use your DPI to adjust your desk to your preferred sitting/standing position.
2. Press the relevant icon. When a position is saved, the icon turns blue.

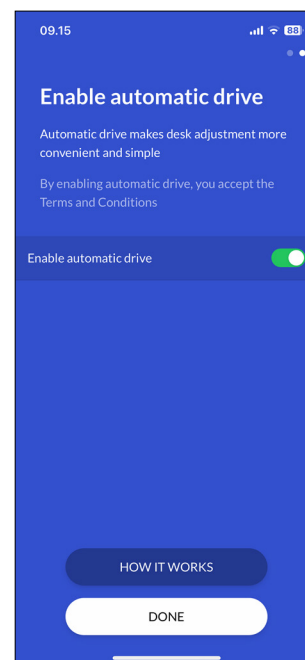
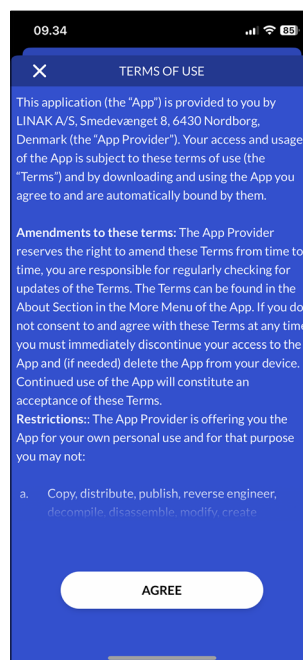
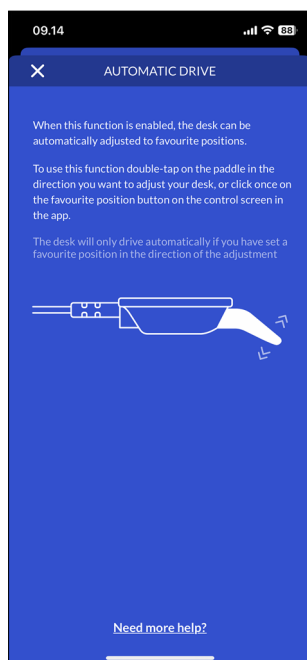
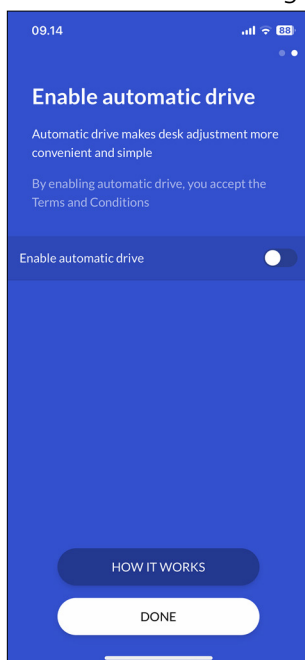


Set both sitting and standing favourite position before pressing 'NEXT'. You cannot return to this page.



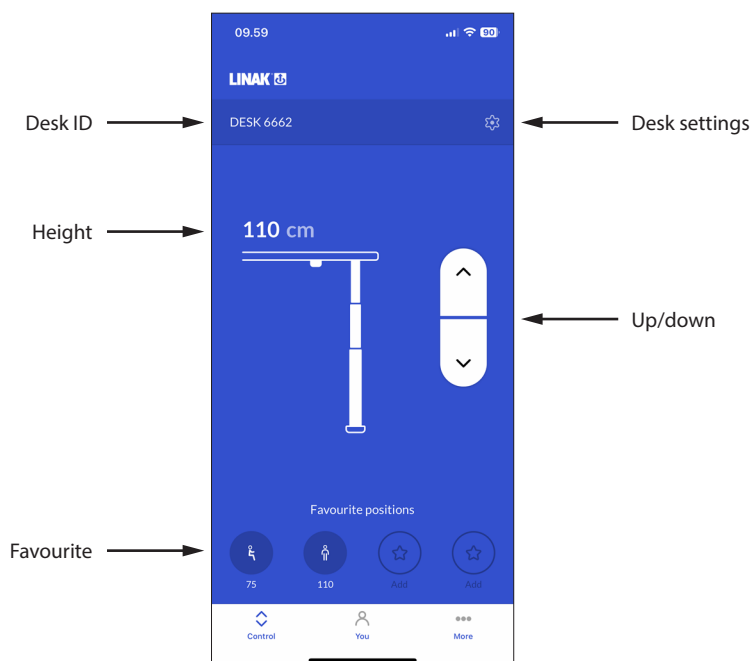
Enabling automatic drive

1. Press the button to enable automatic drive, or press 'HOW IT WORKS' to get a description of this feature.
2. The 'TERMS OF USE' pops up. Press 'AGREE' to agree to these terms.
3. Press 'DONE' to get to the 'Control' screen.



Operation via the app

From the 'Control' screen you can adjust your desk using the up and down arrows or, if you have set any, the favourite position icons.



Desk ID

ID of the connected desk.

Height

Current desk height. The height changes during desk adjustment.

Favourite

The icons symbolise the favourite positions. The favourite position height is displayed below the icons.

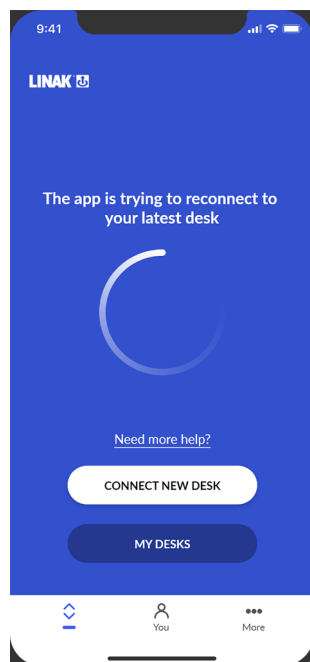
Desk settings

In the 'Desk Settings' section you can change the desk name, set the actual desk height (offset), and set desk height upper and lower limits.

Up/down

Press and hold the button to move the desk up/down.

If you close the Desk Connect™ App, it will lose connection to the DPI. When you open the app again, it shows this screen and automatically tries to connect to any DPI nearby that it has previously been paired to.



Please wait for the connection to be established.

Alternatively, you can tap on 'MY DESKS' to open a list of previously connected desks, or tap on 'CONNECT NEW DESK' to connect to another desk. See also My desks.



Android only:

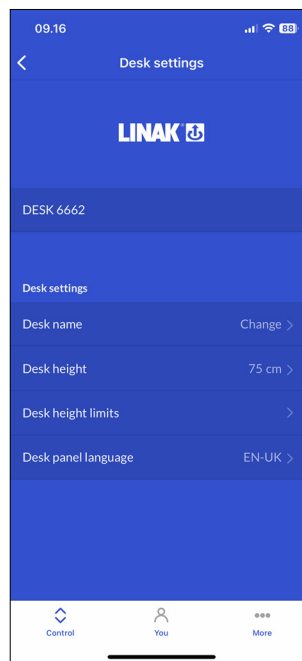
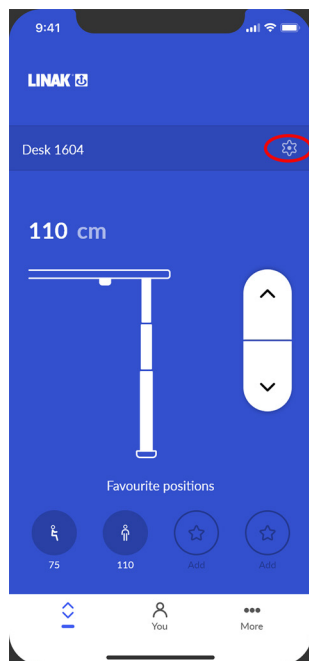
Even with the app closed, Android phones automatically try to connect to the desk (within range) last connected via the Desk Connect™ App.

Settings

App

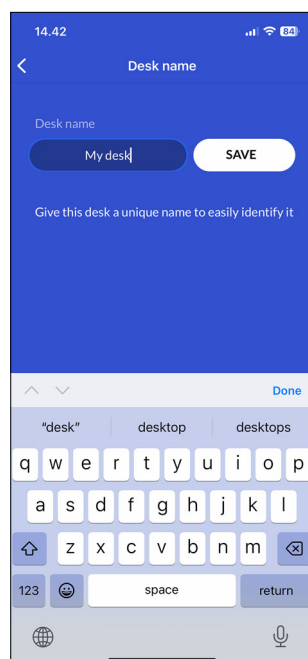
Desk settings

From the 'Control' screen in the Desk Connect™ App press the gear icon to access the 'Desk Settings' menu in which you can change the desk name, set the actual desk height (offset), and set desk height upper and lower limits.



Changing the desk name

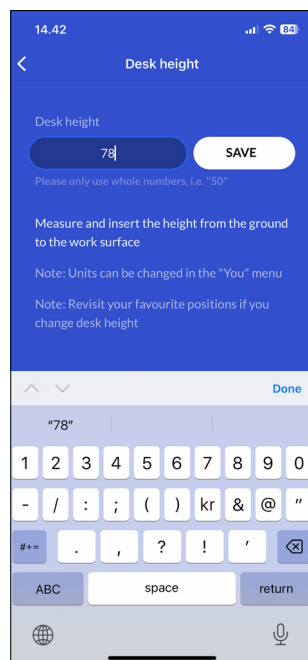
1. Press 'Desk name'
2. Key in a new desk name (1 to 10 characters).
3. Press 'SAVE'.



Adjusting the displayed desk height

If the height shown in the display is not correct, it can be adjusted via this menu.

1. Measure the height from the floor to the tabletop.
2. Press 'Desk height'
3. Key in the actual desk height.
4. Press 'SAVE'.



Units can be changed in the 'You' menu.



Revisit your favourite positions if you change the desk height.

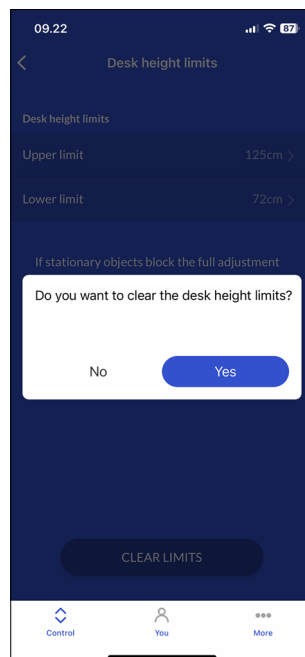
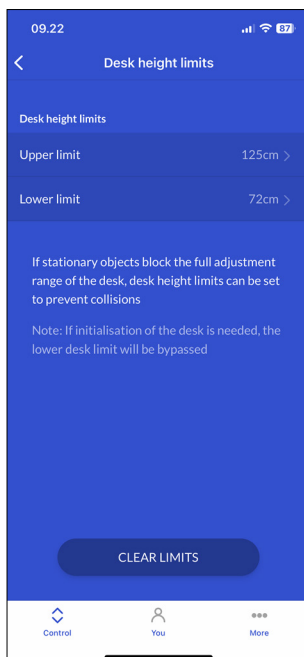
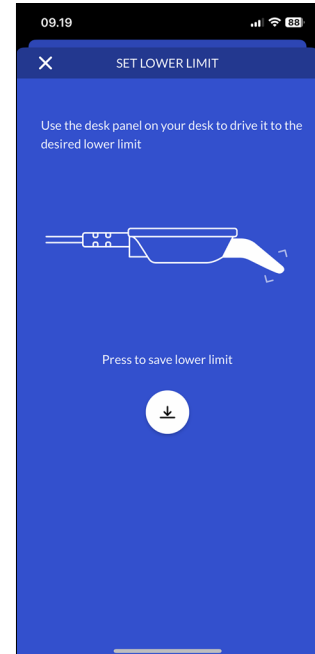
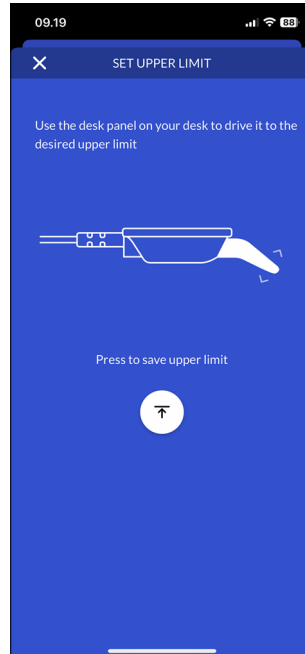
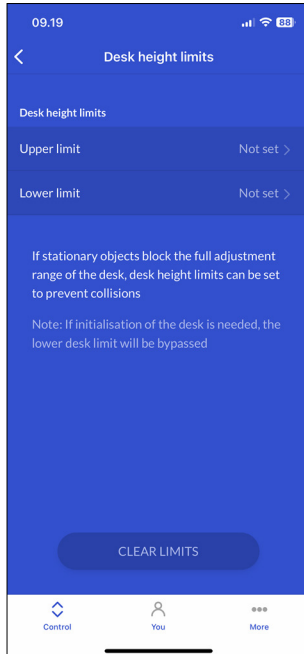
Setting the desk height limits

In this menu you can set the upper and lower desk height limits to prevent collision with for example a shelf above the desk or a cabinet placed under the desk.

1. Press 'Desk height limits'
2. Select 'Upper limit' or 'Lower limit'.
3. Use your DPI to adjust the desk to the desired upper/lower height limit
4. Press the icon to save the actual height as the limit.

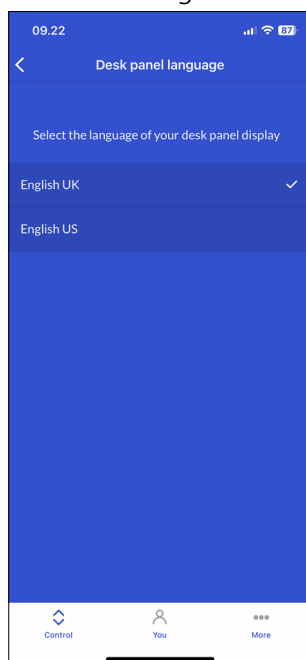


If you want to clear set limits, press 'CLEAR LIMITS' and then 'Yes' to confirm.



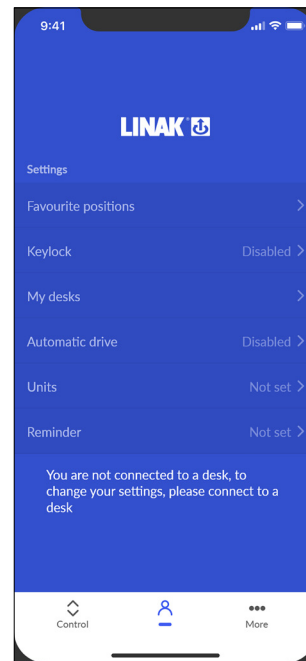
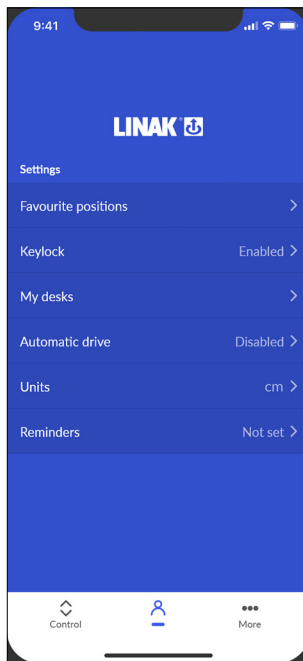
Setting the language of the DPI display

1. Press 'Desk panel language'
2. Select the desired language for the desk panel display. The selected language is indicated by a tick.
3. Press the back arrow to return to the main settings screen.



You menu

In the 'You' section of the Desk Connect™ App you can set or delete your set favourite positions, enable or disable the keylock function, get an overview of your desks, enable or disable automatic drive, change the height unit, and set a reminder. To get access to these features, the app must be connected to a DPI.



Favourite positions

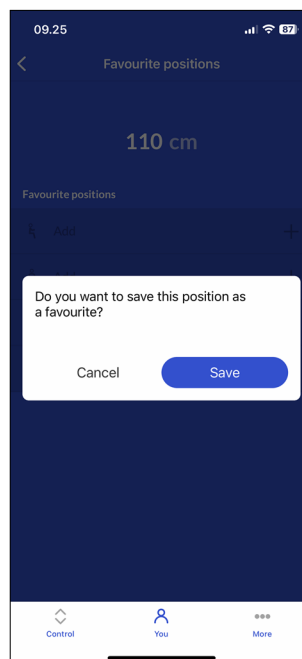
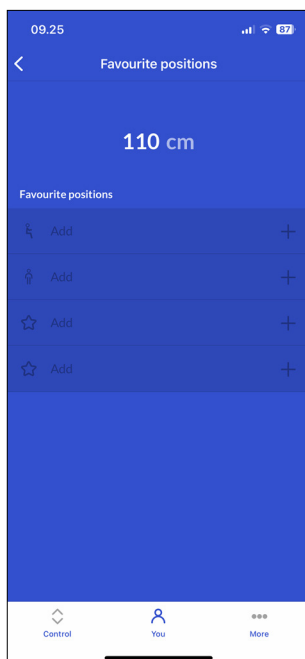
In this menu you can set your favourite positions and delete already set positions.



To change a favourite position, you need to delete it first and then set it again.

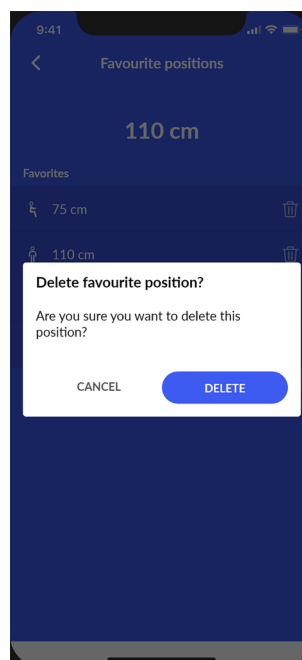
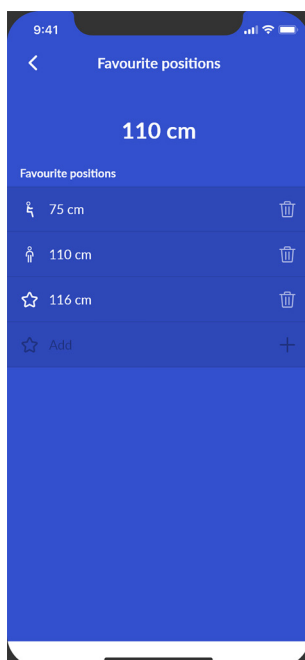
Setting favourite positions

1. Press 'Favourite positions'.
2. Use your DPI to adjust the desk to the desired height.
3. Press the sit or stand icon (or one of the stars).
4. Press 'SAVE' to save the actual desk height as the selected favourite position.
5. Press the back arrow to return to the 'You settings' screen.



Deleting favourite positions

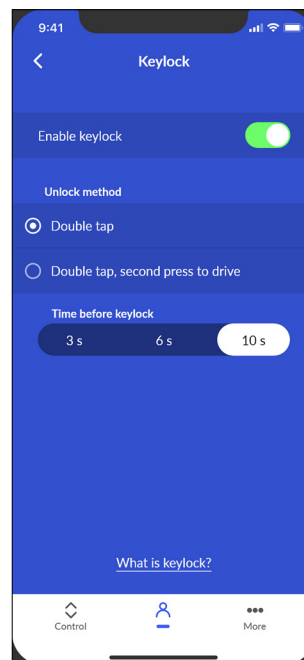
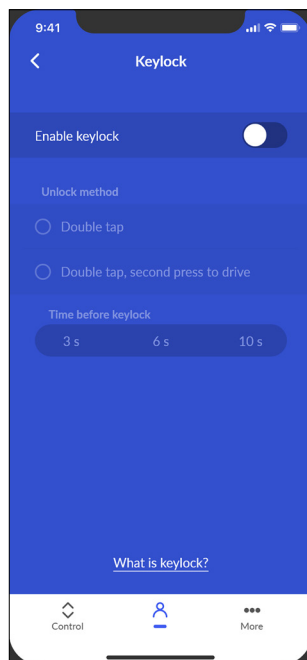
1. Press 'Favourite positions'.
2. Press the favourite position you want to delete.
3. Press 'DELETE' to delete the selected favourite position.
4. Press the back arrow to return to the 'You settings' screen.



Keylock

Enabling the keylock function

1. Press 'Keylock'.
2. Press the button to enable the keylock function. The DPI locks after 10 seconds
3. Select how to unlock the DPI.
 - 3.a. 'Double tap' (double tap the DPI to unlock it; then tilt it to adjust the desk).
 - 3.b. 'Double tap, second press to drive' (double tap the DPI to unlock it and, at the same time, adjust the desk).
4. Press the back arrow to return to the 'You settings' screen.

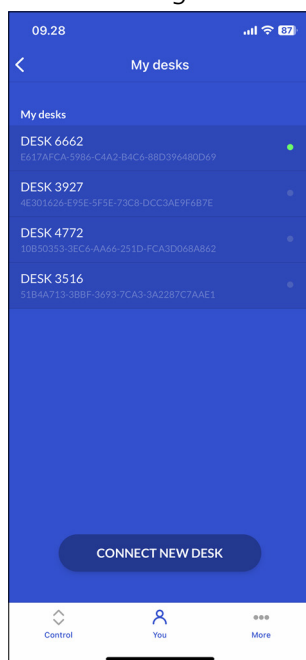


While the keylock is active, a keylock symbol is shown in the DPI display.

My desks

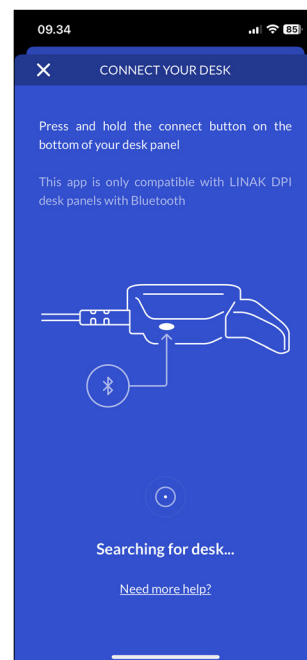
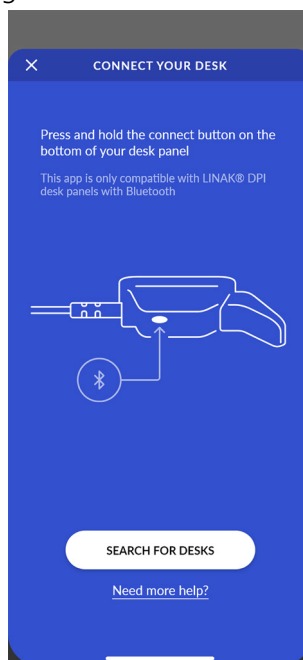
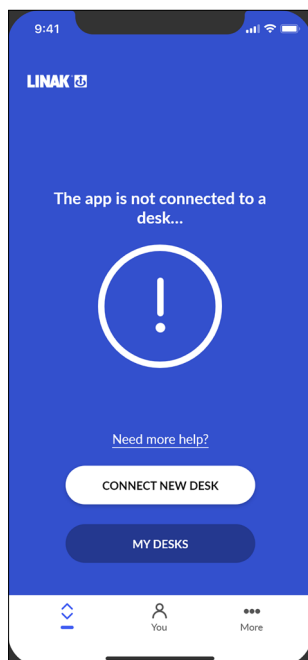
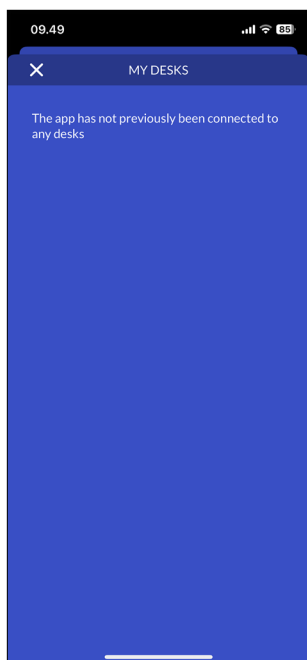
Previously connected desks

1. Press 'My Desks'. The IDs of the previously connected desks are listed. The currently connected desk is marked with a green dot. The list shows maximum five desks with the desk last connected at the top and the desk first connected at the bottom. If you connect to a sixth desk, the bottom-list desk is deleted from the list.
2. If you want to connect to a another desk, tap on the ID of the desk you want to connect to or press 'CONNECT NEW DESK'.
3. Confirm that you want to disconnect from the currently connected desk.
4. Press the back arrow to return to the 'You settings' screen.



No previously connected desks

1. If you skipped the onboarding flow and no desks have previously been connected, the list is empty.
2. Close the list and press 'CONNECT NEW DESK'.
3. Set the new DPI in pairing mode and press 'SEARCH FOR DESKS' to establish connection.
4. Press the back arrow to return to the 'You settings' screen.

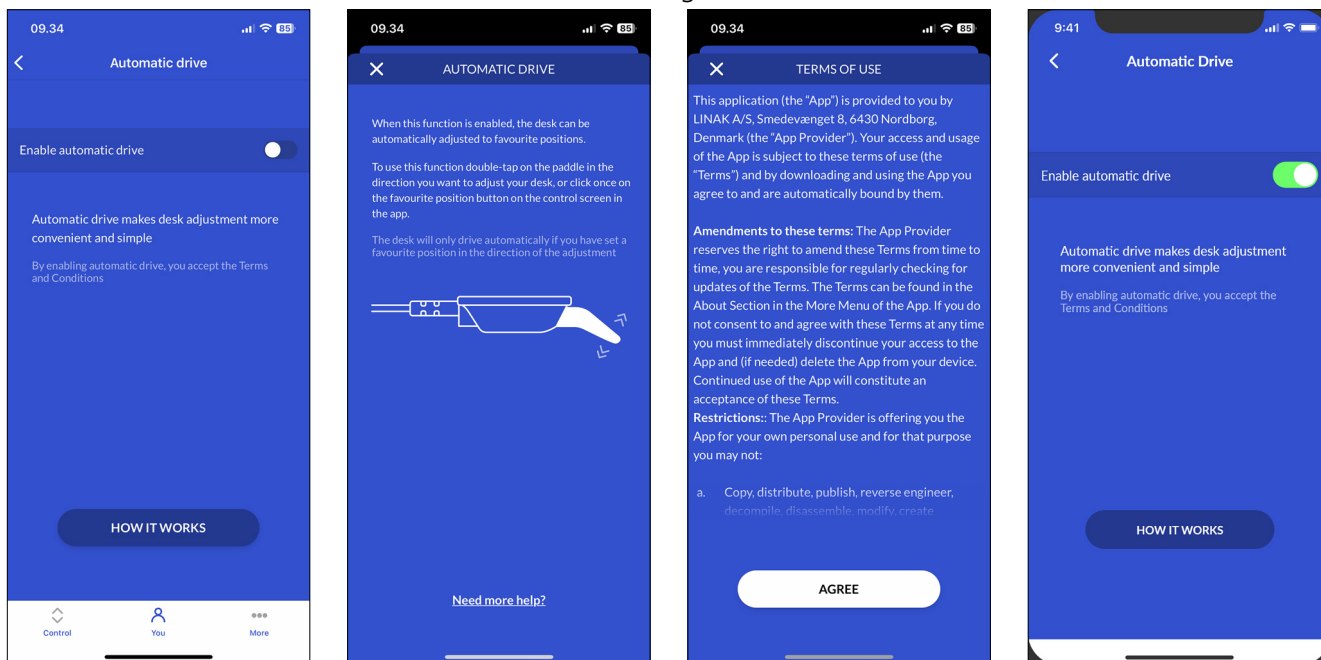


Automatic drive

In this menu you can enable or disable automatic drive. You need to accept the terms of use before you can enable this feature.

Enabling automatic drive

1. Press 'Automatic drive'.
2. Press the button to enable automatic drive, or press 'HOW IT WORKS' to get a description of this feature.
3. The 'TERMS OF USE' pops up. Press 'AGREE' to agree to these terms.
4. Press the back arrow to return to the 'You settings' screen.

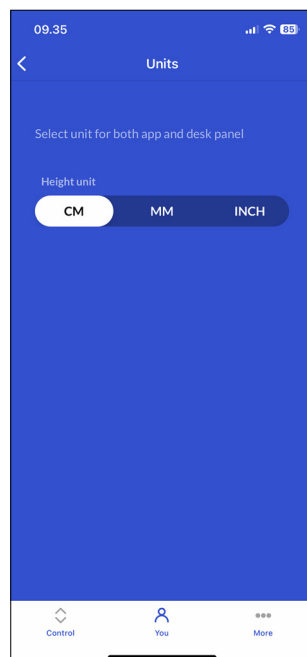


If you close the app or tilt the DPI during automatic drive, the desk stops.

Units

Changing the units

1. Press 'Units'.
2. Press and highlight the desired unit. Choose between 'CM', 'MM' and 'INCH'.
3. Press the back arrow to return to the 'You' screen.



Reminders

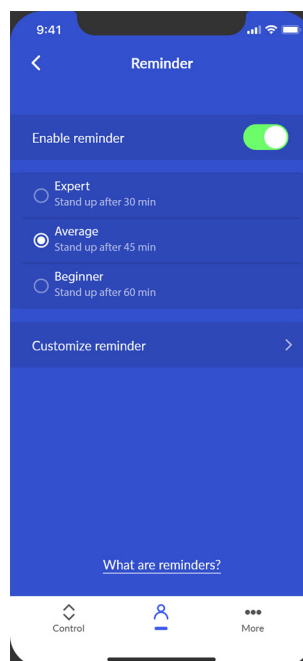
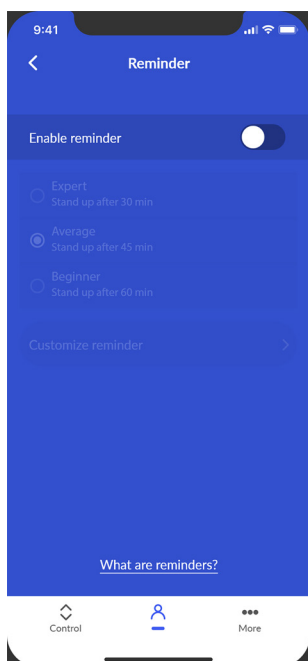
If you enable reminders, you will be urged to change posture during the day which will improve your health and your life quality.

Setting a reminder

1. Press 'Reminders'.
2. Press the button to enable reminders.
3. Choose between preset reminders or set a custom reminder.

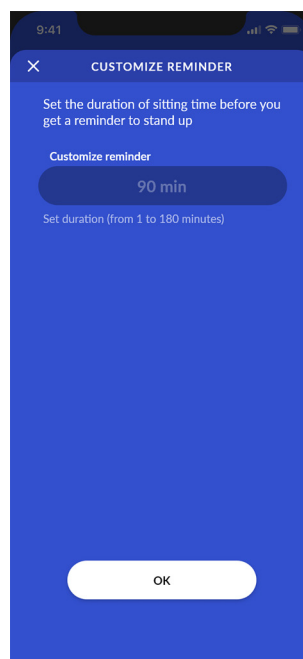
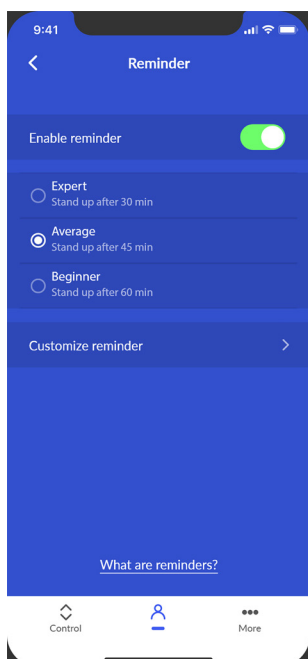
Preset reminders:

- 'Beginner' (be reminded after 60 minutes sitting)
- 'Average' (be reminded after 45 minutes sitting)
- 'Expert' (be reminded after 30 minutes sitting)



Custom reminder

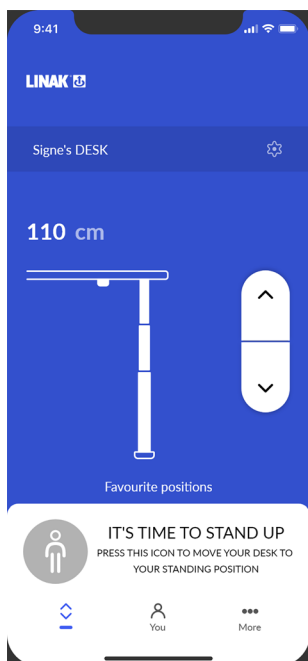
1. Press 'Customize reminder'.
2. Set an interval between reminders (minimum 1 minute; maximum 180 minutes).
3. Press 'OK'.



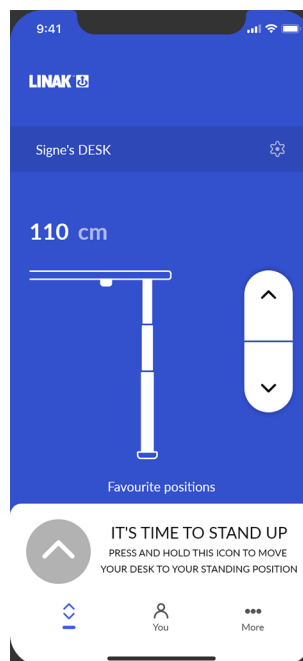
Reminder notifications

If you enable reminders, you will be urged to change posture during the day which will improve your health and your life quality.

- With favourite positions set, press and hold the standing icon to drive your desk to your standing height.
- With favourite positions set and automatic drive enabled, simply press the standing icon drive your desk to your standing height.
- With no favourite position set, press and hold the arrow icon to drive your desk up until it has reached the desired height.



Reminder with favourite position set



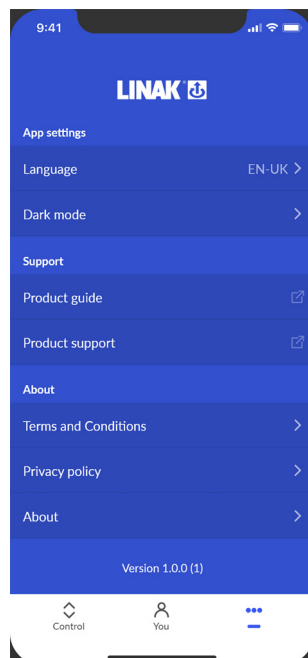
Reminder with no favourite position set



A bell in the DPI display indicates that it is time to stand up.

More menu

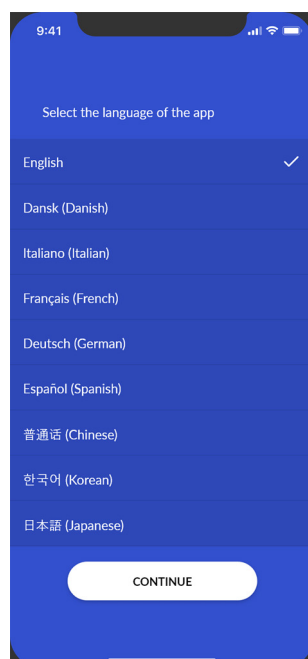
In the 'More' section of the Desk Connect™ App you can change the language and the appearance of the app. You can also get access to a troubleshooting guide and a pairing guide, and you can view the terms and conditions as well as the privacy policy. Furthermore, you can find links to product information and support sites on the web.



App settings

Changing the app language

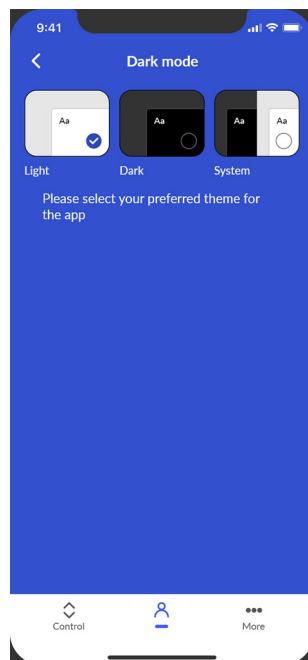
1. Press 'Language'.
2. Press and highlight the desired language to load it on the app.
3. Press the back arrow to return to the 'More' screen.



Example of available languages

Changing the app appearance

1. Press 'Dark mode'.
2. Select the desired appearance. Choose between Light, Dark, and System (system-dependent).
3. Press the back arrow to return to the 'More' screen.



Support

Guides

1. Press 'Product guide'.
2. The app opens the [DESKLINE Start webpage](#) where you can get more information about the DPI1C and the Desk Connect™ App.
3. Press 'Product support'.
4. The app opens the [DPI1C support webpage](#) where you can view setup videos and find answers to various frequently asked questions.

About

Terms and conditions

1. Press 'Terms and conditions' to view the full terms and conditions for use of the app.

Privacy policy

1. Press 'Privacy policy' to view the LINAK privacy policy.

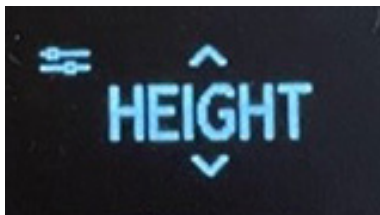
About

Press 'About' and get access to:

- a. Press 'Product information' to open the [product webpage](#) where you can find more information about the DPI and the Desk Connect™ App.
- b. Press 'LINAK Privacy policy' to open the webpage linak.com/privacy-policy and read the overall LINAK privacy policy.

DPI

The settings mode of the DPI1C is primarily meant for installers when installing the system, and for users who do not use the Desk Connect™ App.



End users should not mix the ways of setting up/configuring the DPI but use **either** the Desk Connect™ App **or** the DPI settings mode.



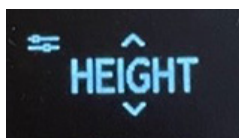
If you set up the DPI1C via the settings mode and then connect to the Desk Connect™ App, favourite positions and units set in the app will override the favourite positions and units selected via the DPI settings mode.

Via the settings mode of the DPI1C you can access the following menus:

- HEIGHT
- UNITS
- FAV. POS.
- LIMITS
- RESTORE
- EXIT

The setup menu

1. To access the settings mode, press the connect button and, at the same time, tilt the paddle down for 3 seconds.
2. Tilt the paddle up or down to scroll through the menus.
The settings mode is identified by the icon in the upper left corner of the display.



3. Press the connect button to select a menu/setting.



After 30 seconds of inactivity, the DPI automatically exits the setup menu.

Height

The first menu is 'HEIGHT'. If the height shown in the display is not correct, it can be adjusted via this menu.

1. Measure the height from the floor to the tabletop.
2. Press the connect button to enter the menu.
3. Tilt the paddle up or down to adjust the displayed height.
4. Press the connect button to save the new height.



Units can be changed in the 'UNITS' menu.



Revisit your favourite positions if you change the desk height.

Units

The second menu is 'UNITS'. In this menu you can change the height unit.

1. Press the connect button to enter the menu.
2. Tilt the paddle up or down to scroll through the options 'CM', 'MM' and 'INCH'.
3. Press the connect button to save the selected option.



If the desk is connected to the Desk Connect™ App, the units set in the app will override the units selected via the DPI settings mode.

Favourite positions

The third menu is 'FAV. POS'. In this menu you can set or delete your favourite positions.

Saving favourite positions

1. Press the connect button to enter the menu.
2. Tilt the paddle up or down to reach the desired favourite position, the option to clear all set favourite positions, or 'CANCEL' to leave the menu and return to the settings menu.
3. When the desired option is displayed, press the connect button.
4. Adjust the desk to the preferred height.
5. Press the connect button to select the height and then again to save the favourite position.



In case you do not want to save this position as a favourite, tilt the paddle and then press the connect button to cancel and return to the favourite positions menu.



If the desk is connected to the Desk Connect™ App, the favourite positions set in the app will override the favourite positions set via the DPI settings mode.

Deleting favourite positions

In the favourite positions menu, tilt the paddle up or down to get to the menu 'CLR FAV.'



In this menu you delete **all** set favourite positions.

1. Tilt the paddle up or down to scroll to the 'CLR FAV.' menu.
2. Press the connect button to select this option and then again to confirm deletion of all favourite positions.



In case you do not want to delete the favourite positions, tilt the paddle and then press the connect button to cancel and return to the 'CLR FAV.' menu.

Limits

The fourth menu is 'LIMITS'. In this menu you can change the upper and lower desk height limits to prevent collision with for example a shelf above the desk or a cabinet placed under the desk.

1. Press the connect button to enter the menu.
2. Tilt the paddle to toggle between 'LOWER', 'UPPER', 'CLEAR LIM.' or 'CANCEL'.
3. Setting limits:
 - 3.1. When the 'LOWER' or 'UPPER' option is displayed, press the connect button.
 - 3.2. Use the paddle to adjust the desk to the preferred height.
 - 3.3. Press the connect button to select the height and then again to set the limit.
 - 3.4. Press the connect button again to set the limit.



In case you do not want to save the selected position as a limit, tilt the paddle and then press the connect button to cancel and return to the limits menu.

4. Clearing set limits:
 - 4.1. When the 'CLEAR LIM.' option is displayed, press the connect button.
 - 4.2. Press the connect button again to clear all set limits.
5. Leaving the limits menu:
 - 5.1. When the 'CANCEL' option is displayed, press the connect button to return to the settings menu.

Restore

The fifth menu is 'RESTORE'. In this menu you can restore the DPI to its default settings.



The default settings are the latest settings programmed via the DPI1C configurator.

This menu is useful in case one user takes over a desk from another user.

1. Press the connect button to enter the menu.
2. Press the connect button again to confirm restoring all factory settings.



In case you do not want to restore the DPI, tilt the paddle and then press the connect button to cancel and return to the restore menu.

Exit

The last menu is 'EXIT'. From here you can exit the settings menu when all settings are done.

1. Press the connect button to exit the settings menu.



After 30 seconds of inactivity, the DPI automatically exits the setup menu.

Accessories and repair



WARNING

Opening the product

Risk of injury to persons and of malfunction

- Do not open the product unless you are authorised to do so.

Accessories

Please contact your nearest LINAk contact.

Repairs

Systems should only be repaired by an authorised LINAk service centre or engineer. Systems to be repaired under warranty must be sent to an authorised LINAk service centre.

Spare parts

Please contact your nearest LINAk contact for information on spare parts.

Disposal of LINAK products

As LINAK customers often ask us how our products can be disposed or scrapped we have prepared this guide that enables a classification to different waste fractions for recycling or combustion.

Guide

We recommend our products to be disassembled as much as possible and divided into different waste groups for recycling or combustion.

For example, waste can be sorted into metals, plastics, cable scrap, combustible material, and recoverable resources.

Some of these main groups can be further divided into subgroups; e.g. metal can be divided into steel/aluminium/copper and plastic can be divided into ABS/PA/PE/PP.

As an example, the table below breaks down the different components in LINAK products to various recycling groups:

Product	Component	Recycling group
Handset/Control	Plastic housing	Plastic recycling or combustion
	Cable	Cable scrap or combustion
	PCB board	Electronics scrap

By now, almost all our cast plastic parts are supplied with an interior code for plastic type and fibre contents, if any.

Main groups of disposal

Product	Metal scrap	Cable scrap	Electronics scrap	Plastic recycling or combustion	Paper and cardboard recycling
DPI		X	X	X	
Packaging				X	X

Contacts

FACTORIES

Denmark - Headquarters
 LINAK A/S
 Phone: +45 73 15 15 15
 Fax: +45 74 45 80 48
 Fax (Sales): +45 73 15 16 13
 Web: www.linak.com

China
 LINAK (Shenzhen) Actuator Systems, Ltd.
 Phone: +86 755 8610 6656
 Phone: +86 755 8610 6990
 Web: www.linak.cn

Slovakia
 LINAK Slovakia s.r.o.
 Phone: +421 51 7563 444
 Web: www.linak.sk

Thailand
 LINAK APAC Ltd.
 Phone: +66 33 265 400
 Web: www.linak.com

USA
 LINAK U.S. Inc.
 Americas Headquarters
 Phone: +1 502 253 5595
 Fax: +1 502 253 5596
 Web: www.linak-us.com
 www.linak-latinamerica.com

SUBSIDIARIES

Australia
 LINAK Australia Pty. Ltd
 Phone: +61 3 8796 9777
 Fax: +61 3 8796 9778
 E-mail: sales@linak.com.au
 Web: www.linak.com.au

Austria
 LINAK Zweigniederlassung - Österreich (Wien)
 Phone: +43 (1) 890 7446
 Fax: +43 (1) 890 744615
 E-mail: info@linak.de
 Web: www.linak.at - www.linak.hu

Belgium
 LINAK Actuator-Systems NV/SA
 (Belgium & Luxembourg)
 Phone: +32 (0)9 230 01 09
 E-mail: beinfo@linak.be
 Web: www.linak.be - www.fr.linak.be

Brazil
 LINAK Do Brasil Comércio De Atuadores Ltda.
 Phone: +55 (11) 2832 7070
 Fax: +55 (11) 2832 7060
 E-mail: info@linak.com.br
 Web: www.linak.com.br

Canada
 LINAK Canada Inc.
 Phone: +1 502 253 5595
 Fax: +1 416 255 7720
 E-mail: info@linak.ca
 Web: www.linak-us.com

Czech Republic
 LINAK C&S s.r.o.
 Phone: +42 058 174 1814
 Fax: +42 058 170 2452
 E-mail: info@linak.cz
 Web: www.linak.cz - www.linak.sk

Denmark - International
 LINAK International
 Phone: +45 73 15 15 15
 E-mail: info@linak.com
 Web: www.linak.com

Denmark - Sales
 LINAK Danmark A/S
 Phone: +45 86 80 36 11
 Fax: +45 86 82 90 51
 E-mail: linak@linak-silkeborg.dk
 Web: www.linak.dk

Finland
 LINAK OY
 Phone: +358 10 841 8700
 E-mail: linak@linak.fi
 Web: www.linak.fi

France
 LINAK France E.U.R.L
 Phone: +33 (0) 2 41 36 34 34
 Fax: +33 (0) 2 41 36 35 00
 E-mail: linak@linak.fr
 Web: www.linak.fr

Germany
 LINAK GmbH
 Phone: +49 6043 9655 0
 Fax: +49 6043 9655 60
 E-mail: info@linak.de
 Web: www.linak.de

India
 LINAK A/S India Liaison Office
 Phone: +91 120 4531797
 Fax: +91 120 4786428
 E-mail: info@linak.in
 Web: www.linak.in

Ireland
 LINAK UK Limited (Ireland)
 Phone: +44 (0)121 544 2211
 Fax: +44 (0)121 544 2552
 +44 (0)796 855 1606 (UK Mobile)
 +35 387 634 6554 (Rep.of Ireland Mobile)
 E-mail: sales@linak.co.uk
 Web: www.linak.co.uk

Italy
 LINAK ITALIA S.r.l.
 Phone: +39 02 48 46 33 66
 Fax: +39 02 48 46 82 52
 E-mail: info@linak.it
 Web: www.linak.it

Japan

LINAK K.K.
 Phone: 81-45-533-0802
 Fax: 81-45-533-0803
 E-mail: linak@linak.jp
 Web: www.linak.jp

Malaysia
 LINAK Actuators Sdn. Bhd.
 Phone: +60 4 210 6500
 Fax: +60 4 226 8901
 E-mail: info@linak-asia.com
 Web: www.linak.my

Netherlands
 LINAK Actuator-Systems B.V.
 Phone: +31 76 5 42 44 40 /
 +31 76 200 11 10
 E-mail: info@linak.nl
 Web: www.linak.nl

New Zealand
 LINAK New Zealand Ltd
 Phone: +64 9580 2071
 Fax: +64 9580 2072
 E-mail: nzsales@linak.com.au
 Web: www.linak.com.au

Norway
 LINAK Norge AS
 Phone: +47 32 82 90 90
 E-mail: info@linak.no
 Web: www.linak.no

Poland
 LINAK Polska
 LINAK Danmark A/S (Spółka Akcyjna)
 Phone: +48 22 295 09 70 /
 +48 22 295 09 71
 E-mail: info@linak.pl
 Web: www.linak.pl

Republic of Korea
 LINAK Korea Ltd.
 Phone: +82 2 6231 1515
 Fax: +82 2 6231 1516
 E-mail: info@linak.kr
 Web: www.linak.kr

Slovakia
 LINAK Slovakia S.R.O.
 Phone: +421 51 7563 444
 Web: www.linak.sk

Spain
 LINAK Actuadores, S.L.u
 Phone: +34 93 588 27 77
 Fax: +34 93 588 27 85
 E-mail: esma@linak.es
 Web: www.linak.es

Sweden
 LINAK Scandinavia AB
 Phone: +46 8 732 20 00
 Fax: +46 8 732 20 50
 E-mail: info@linak.se
 Web: www.linak.se

Switzerland
 LINAK AG
 Phone: +41 43 388 31 88
 Fax: +41 43 388 31 87
 E-mail: info@linak.ch
 Web: www.linak.ch - www.fr.linak.ch
 www.it.linak.ch

Taiwan
 LINAK (Shenzhen) Actuator systems Ltd.
 Taiwan Representative office
 Phone: +886 2 272 90068
 Fax: +886 2 272 90096
 E-mail: sales@linak.com.tw
 Web: www.linak.com.tw

Turkey
 LINAK İth. İhr. San. ve Tic. A.Ş.
 Phone: + 90 312 4726338
 Fax: + 90 312 4726635
 E-mail: info@linak.com.tr
 Web: www.linak.com.tr

United Kingdom
 LINAK UK Limited
 Phone: +44 (0)121 544 2211
 Fax: +44 (0)121 544 2552
 E-mail: sales@linak.co.uk
 Web: www.linak.co.uk

Argentina
 Novotec Argentina SRL
 Phone: 011-4303-8989 / 8900
 Fax: 011-4032-0184
 E-mail: info@novotecargentina.com
 Web: www.novotecargentina.com

Colombia
 MEM Ltda
 Phone: +[57] (1) 334-7666
 Fax: +[57] (1) 282-1684
 E-mail: servicioalcliente@memltda.com.co
 Web: www.mem.net.co

India
 Mechatronics Control Equipments India Pvt Ltd
 Phone: +91-44-28558484, 85
 E-mail: bala@mechatronicscontrol.com
 Web: www.mechatronicscontrol.com

Indonesia
 PT. Himalaya Everest Jaya
 Phone: +6 221 544 8956 /+6 221 544 8965
 Fax: +6 221 619 1925
 Fax (Sales): +6 221 619 4658
 E-mail: hejplastic-div@centrin.net.id
 Web: www.hej.co.id

Israel
 NetivTech LTD
 Phone: +972 55-2266-535
 Fax: +972 2-9900-560
 Email: info@NetivTech.com
 Web: www.netivtech.com

Singapore
 Servo Dynamics Pte Ltd
 Phone: +65 6844 0288
 Fax: +65 6844 0070
 E-mail: servodynamics@servo.com.sg

South Africa
 Industrial Specialised Applications CC
 Phone: +27 011 466 0346
 E-mail: gartht@isagroup.co.za
 Web: www.isaza.co.za

United Arab Emirates
 Mechatronics
 Phone: +971 4 267 4311
 Fax: +971 4 267 4312
 E-mail: mechtron@emirates.net.ae

DISTRIBUTORS

Terms of use

LINAK® takes great care in providing accurate and up-to-date information on its products. However, the user is responsible for determining the suitability of LINAK products for a specific application. Due to continual development, LINAK products are subject to frequent modifications and changes. LINAK reserves the rights to conduct modifications, updates, and changes without any prior notice. For the same reason, LINAK cannot guarantee the correctness and actual status of imprinted information on its products.

LINAK uses its best efforts to fulfil orders. However, for the reasons mentioned above, LINAK cannot guarantee availability of any particular product at any given time. LINAK reserves the right to discontinue the sale of any product displayed on its website or listed in its catalogues or in other written material created and produced by LINAK, LINAK subsidiaries, or LINAK affiliates. All sales are subject to the 'Standard Terms of Sale and Delivery for LINAK A/S' available on LINAK websites. LINAK and the LINAK logotype are registered trademarks of LINAK A/S. All rights reserved.



WE IMPROVE YOUR LIFE